



Wayfinding

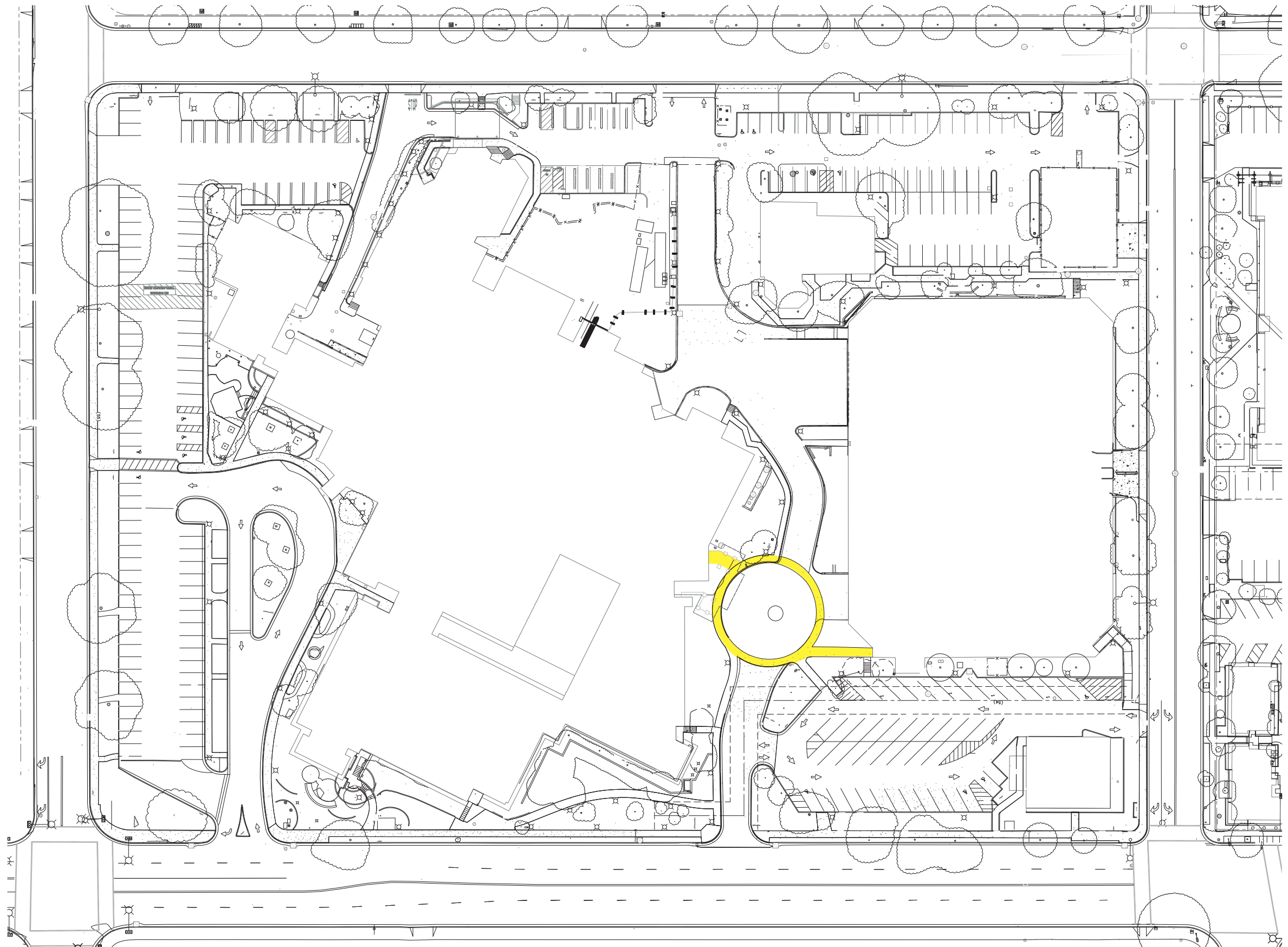
Salinas Valley Memorial Hospital

November 28, 2012

Lat: 32°59'36.25N

Lon: -117°15'41.13"W

Exterior Main Entrance



Exterior Main Entrance



Exterior Main Entrance



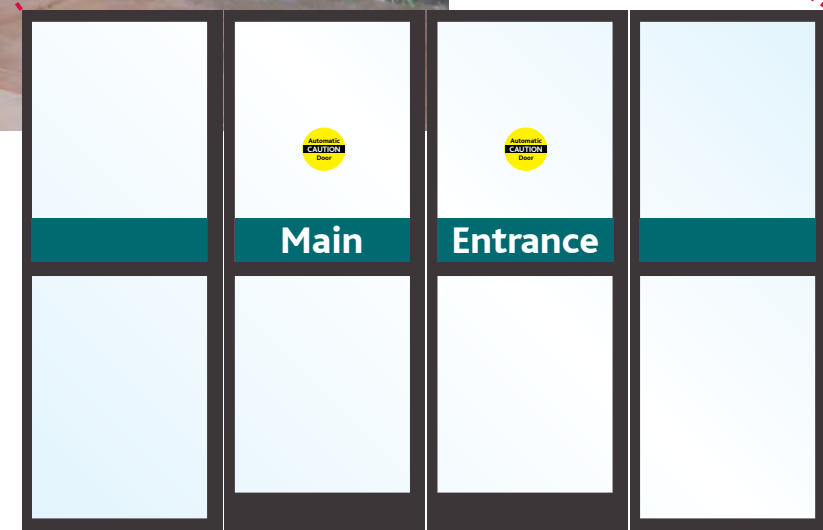
Before

Exterior Main Entrance



Main Entrance

After

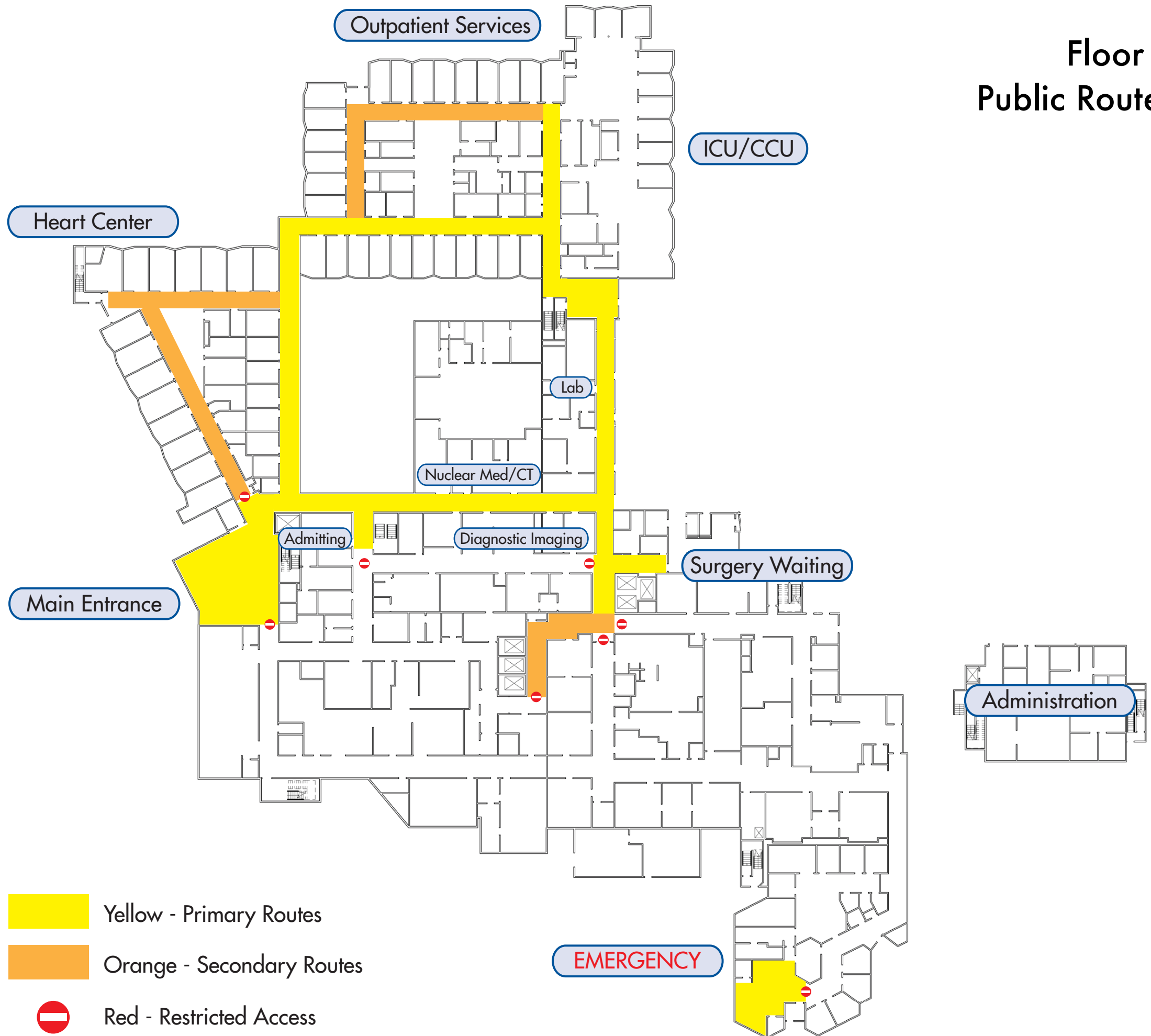


Main Lobby Floor 1



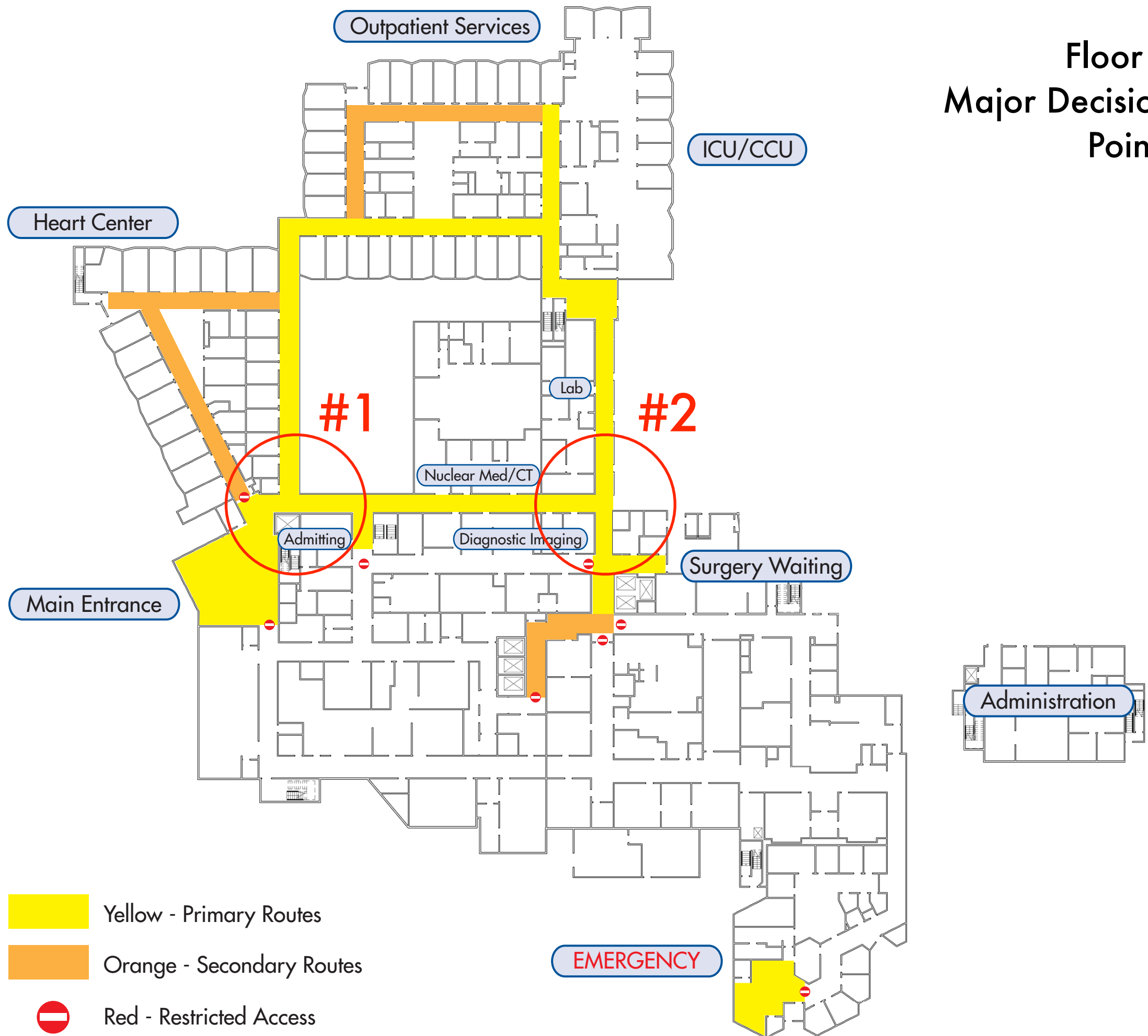
Option - Touchscreen Location

Floor 1 Public Routes



Floor 1

Major Decision Points



Wayfinding Floor 1



Before

Wayfinding Floor 1



After

Wayfinding Floor 1



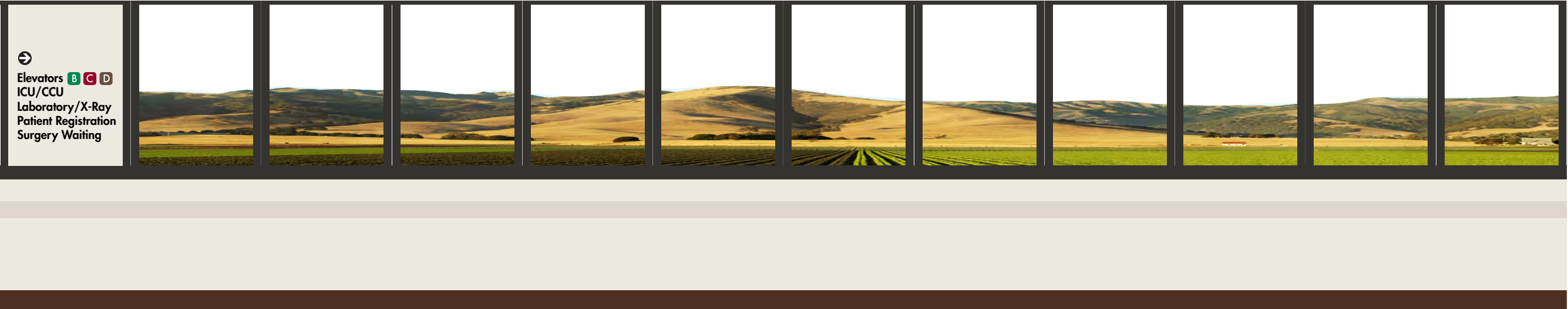
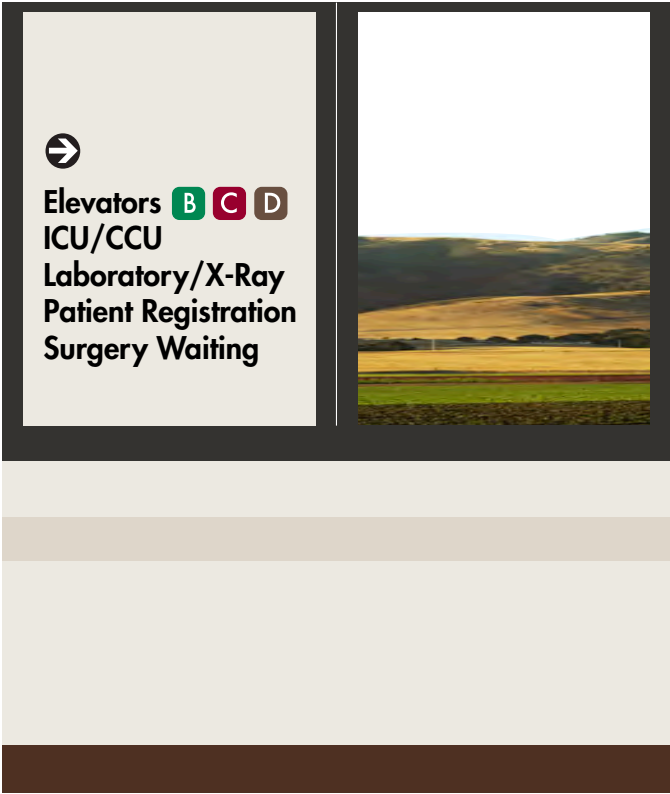
Before

Wayfinding Floor 1



After

Window Graphics Option 1



Window Graphics Option 1



Wayfinding
2nd Major
Decision
Point

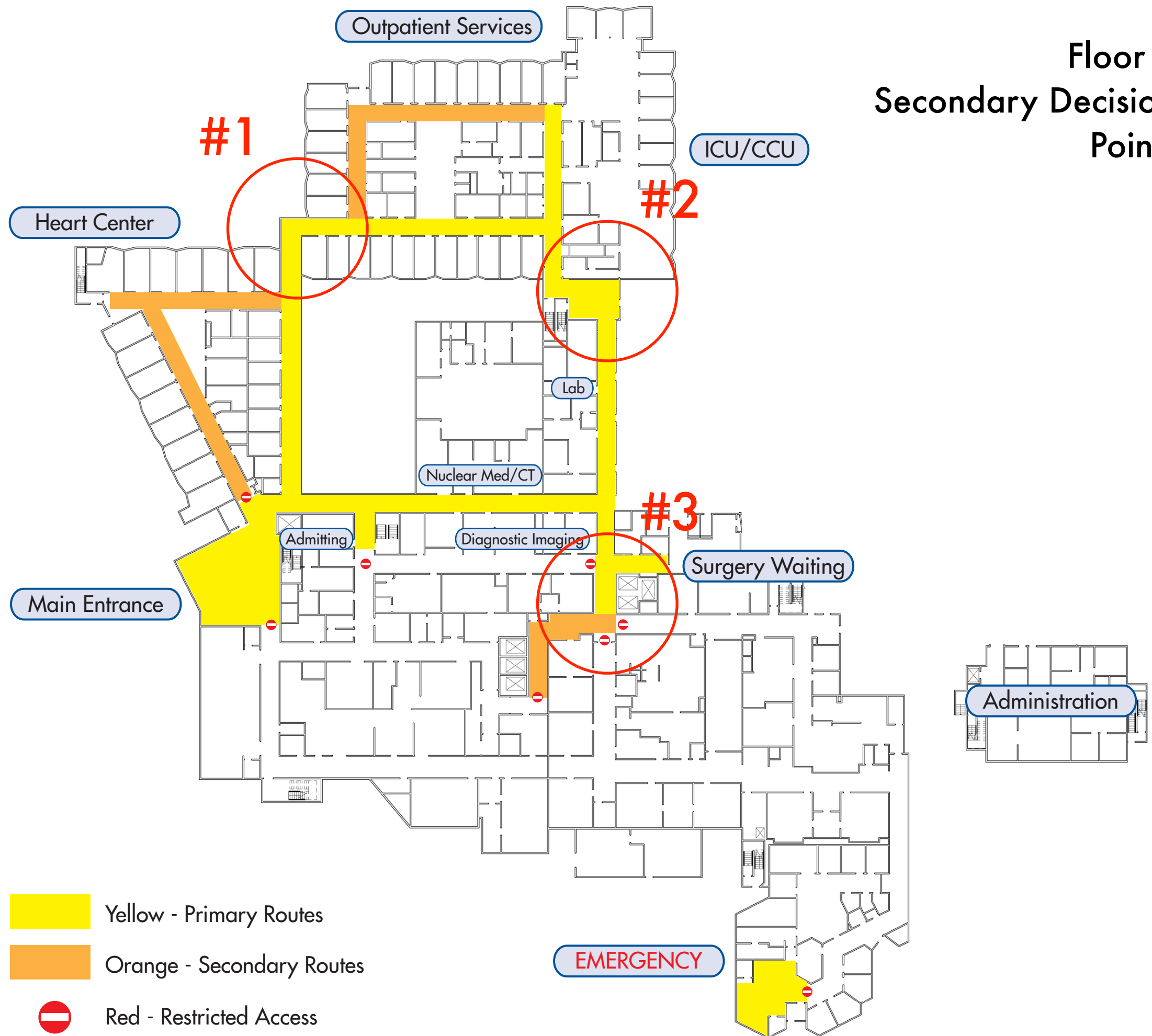


Floor 1	
↑	
Elevators B C	
to access Patient Floors	
201 to 537	
Surgery Waiting	
→	
Gift Shop (located in parking structure)	
Heart Center 151 to 165	
Main Lobby/Parking	
Radiology/X-Ray	
Starbucks (located in parking structure)	

New Directional to Replace
Existing Construction Sign

Floor 1

Secondary Decision Points



Wayfinding Floor 1



Move Existing Outpatient Services Overhead

Wayfinding Floor 1



Options: Window Treatment, Digital Prints, Artwork or Accent Point

Wayfinding Floor 1



Move Existing Sign

Wayfinding Floor 1



Add Directional

Wayfinding Floor 1



Add Wall Mounted Overhead

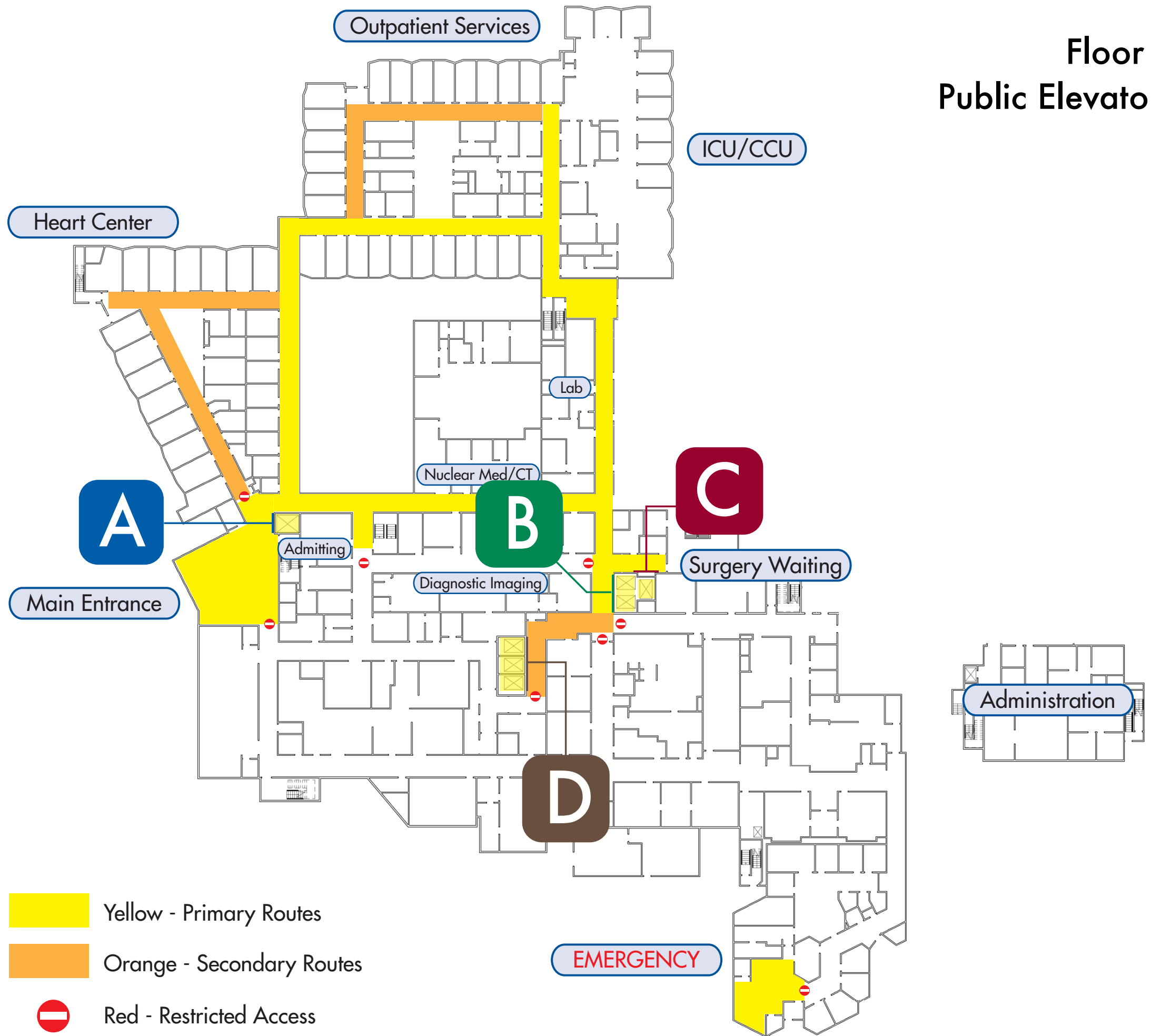
⬆ Elevators **D**

➡ Elevators **B** **C**

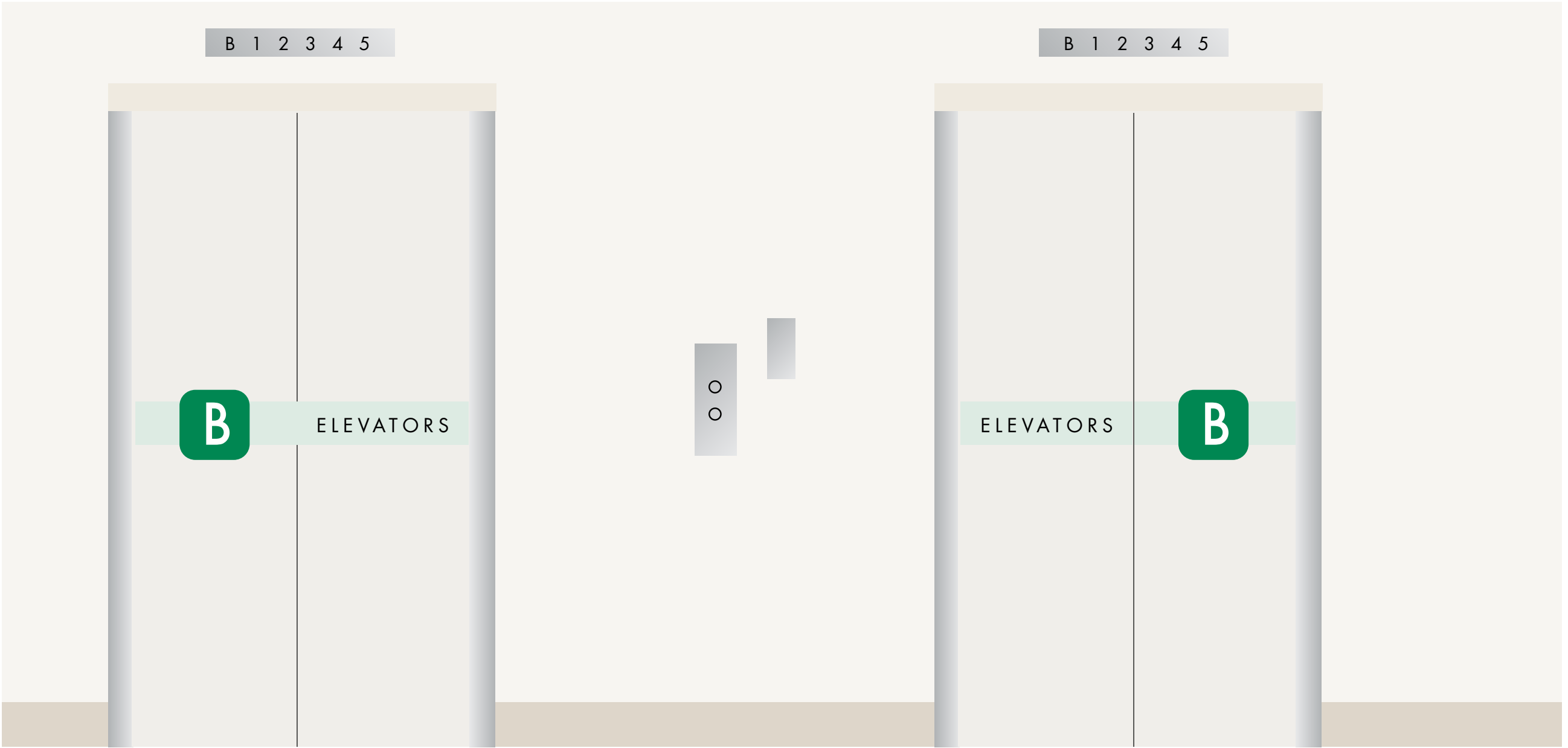
➡ Main Lobby/Parking

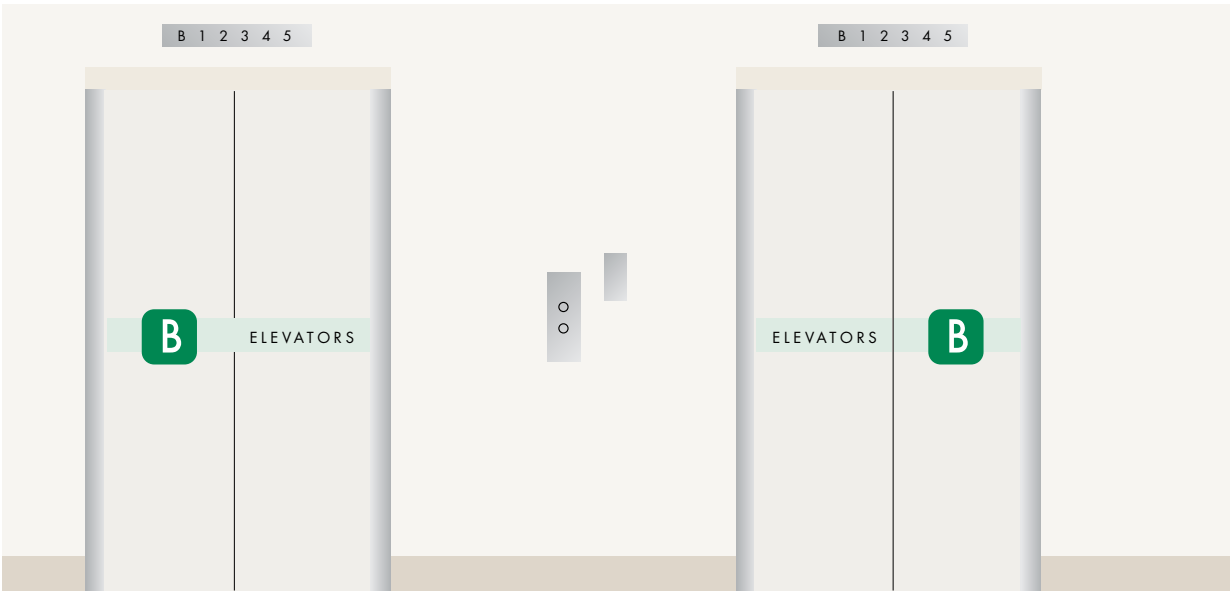
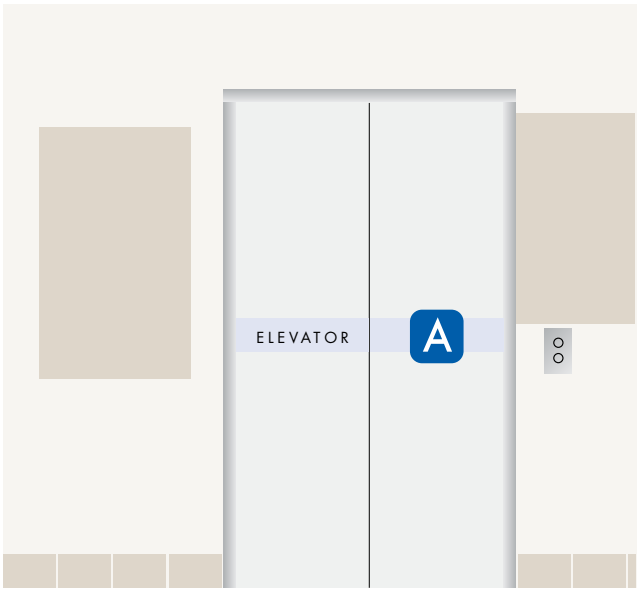
➡ Surgery Waiting ♀♂

Floor 1 Public Elevators

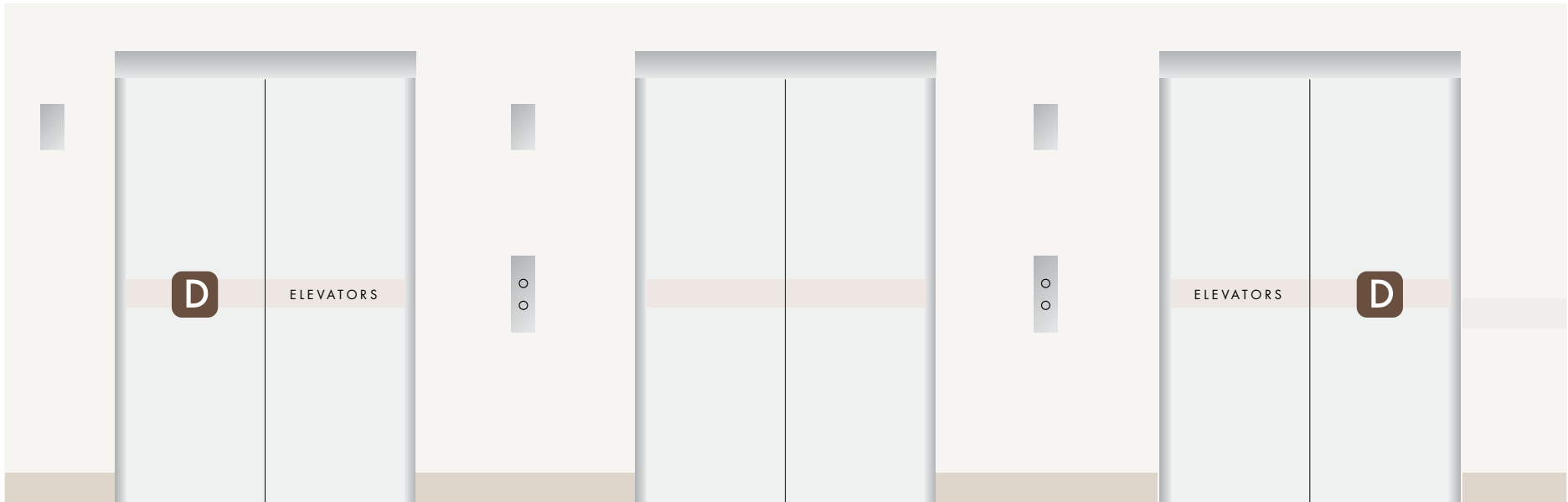
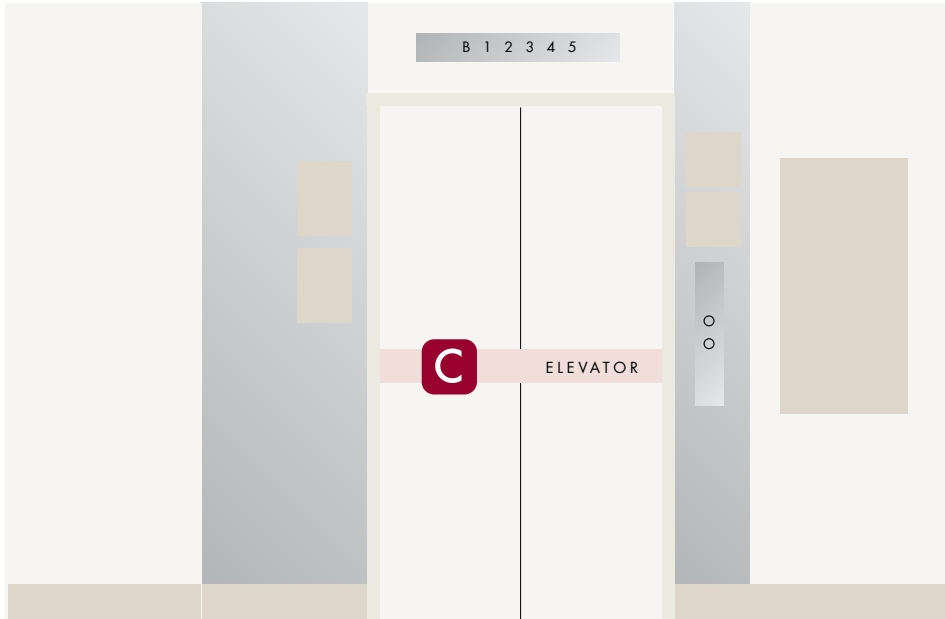


Elevator ID
Option 1





Elevator ID Option 1



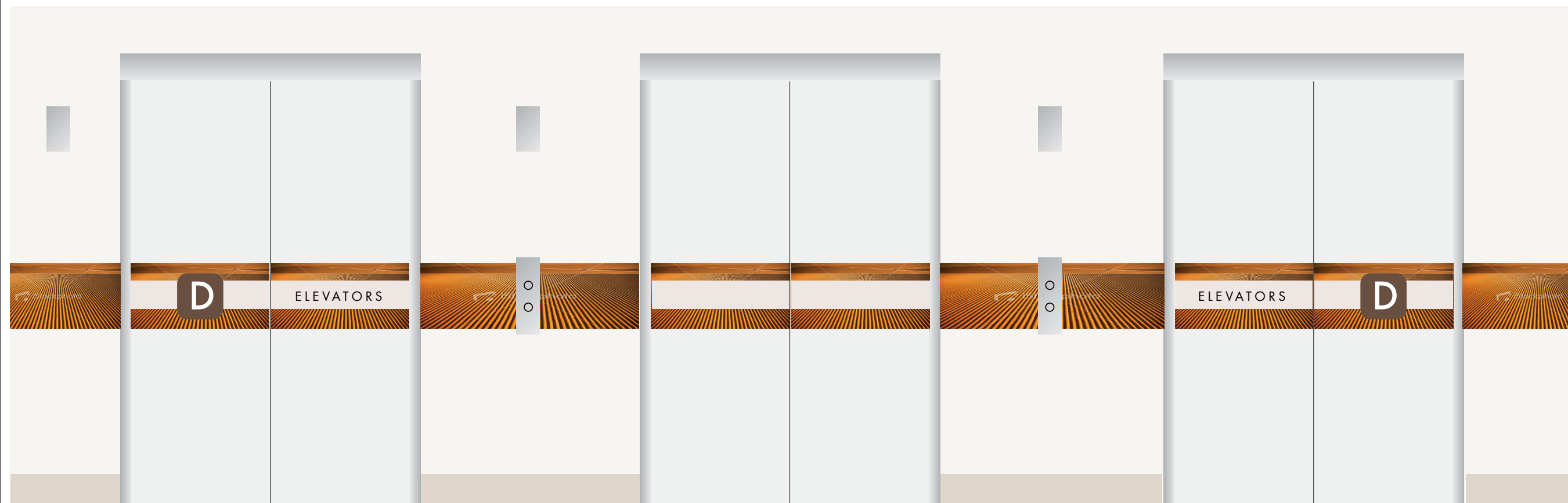
Elevator ID
Option 2



Elevator ID
Option 2



Elevator ID Option 2



Elevator ID
Option 3



Elevator ID Option 3



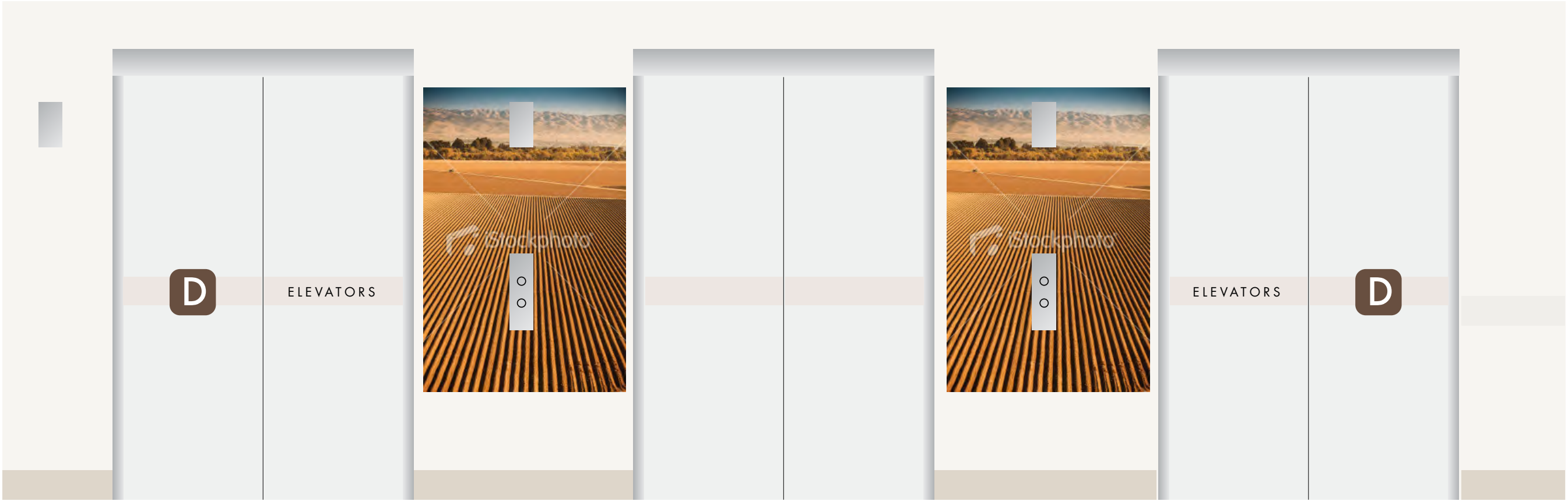
B 1 2 3 4 5



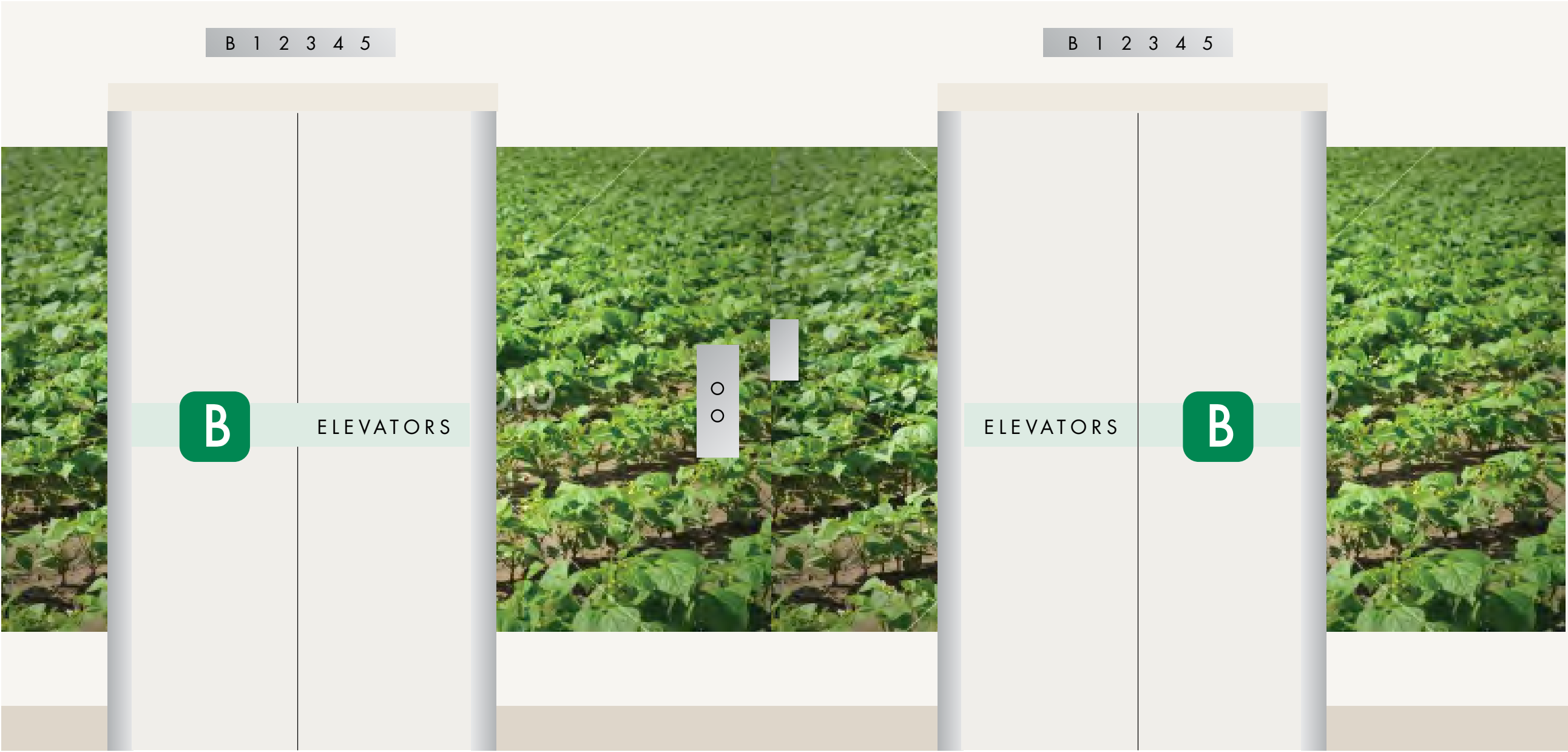
ELEVATOR

○
○

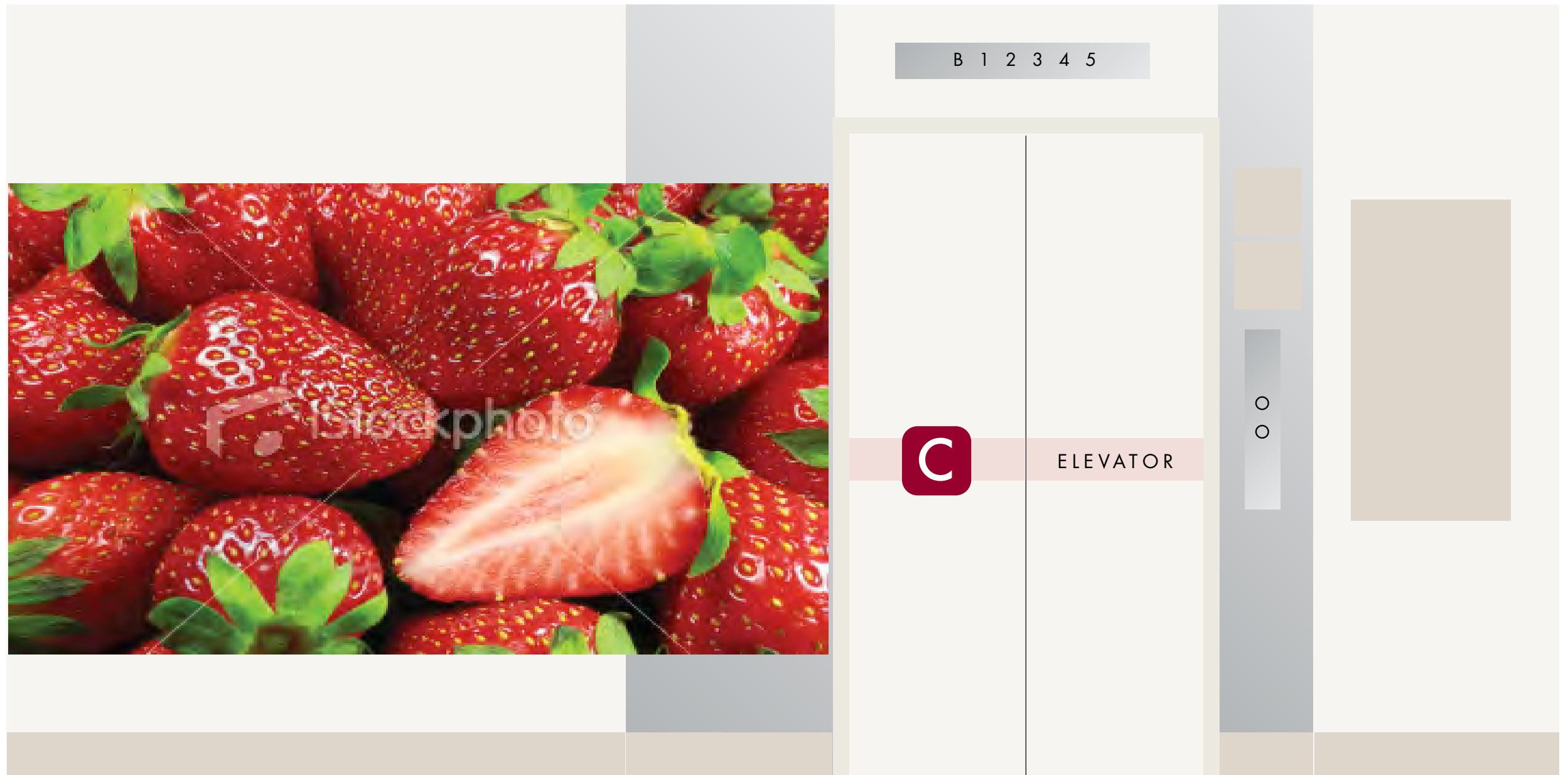
Elevator ID
Option 3



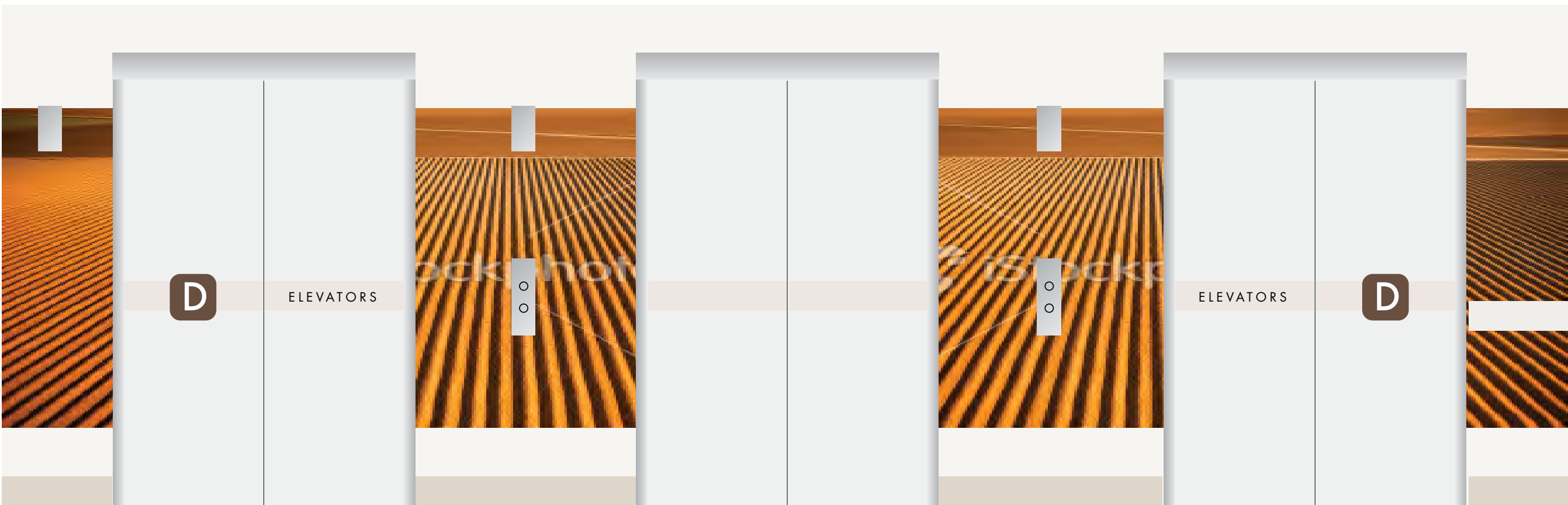
Elevator ID
Option 4



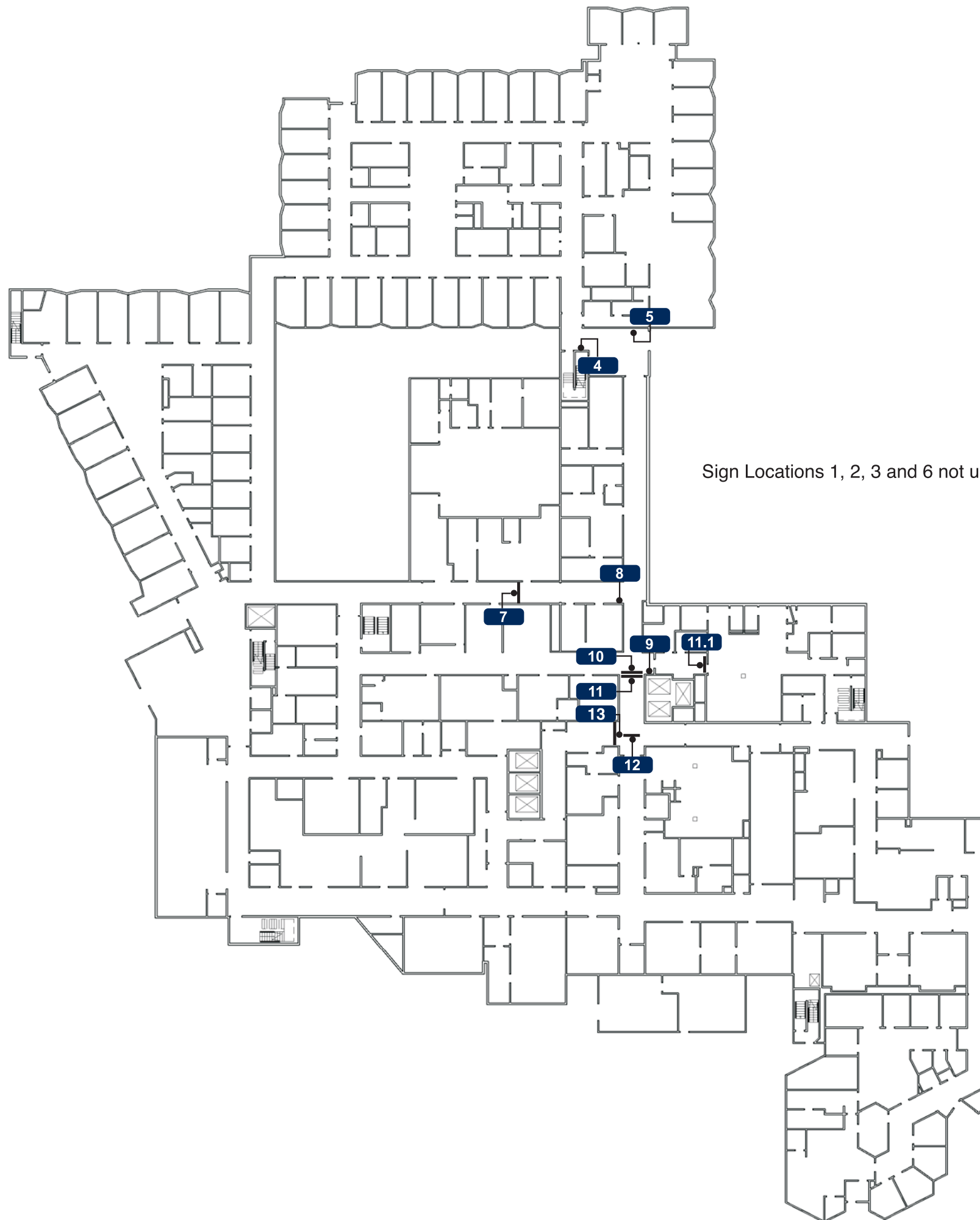
Elevator ID Option 4



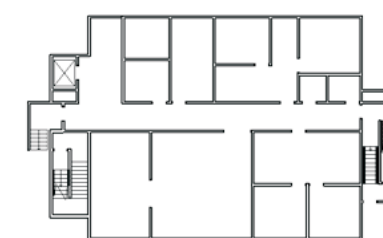
Elevator ID Option 4



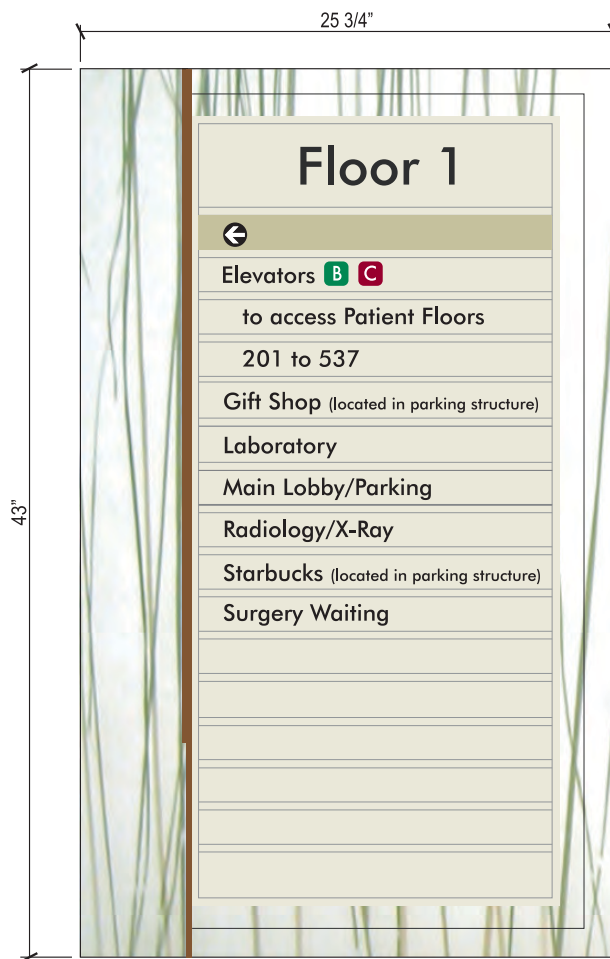
Wayfinding Floor 1



Sign Locations 1, 2, 3 and 6 not used.



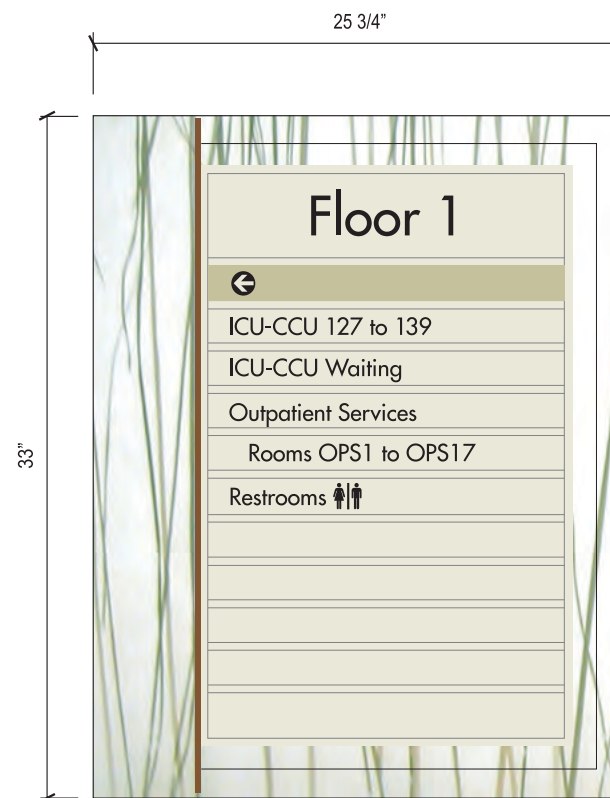
Wayfinding Floor 1



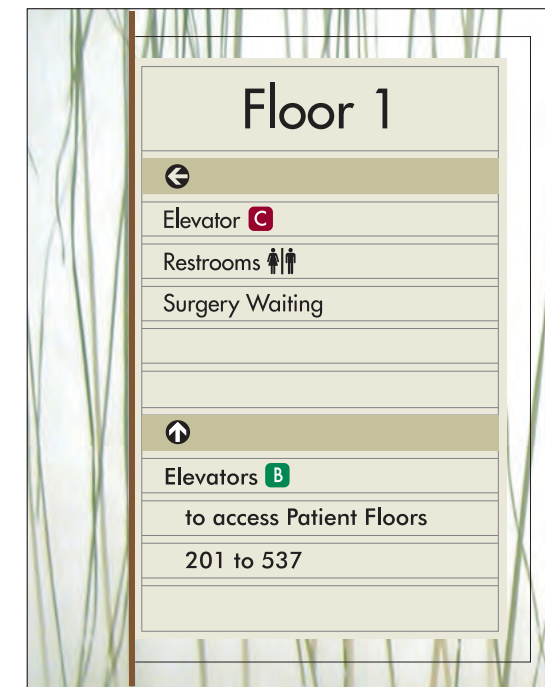
4 15 STRIP - SIGN TYPE B.2
SCALE: 3/4" = 1' 0"



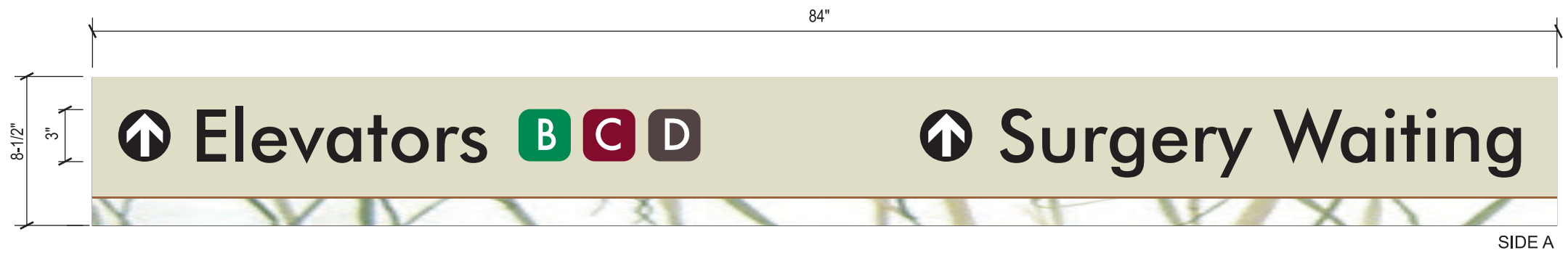
8 15 STRIP - SIGN TYPE B.2
SCALE: 3/4" = 1' 0"



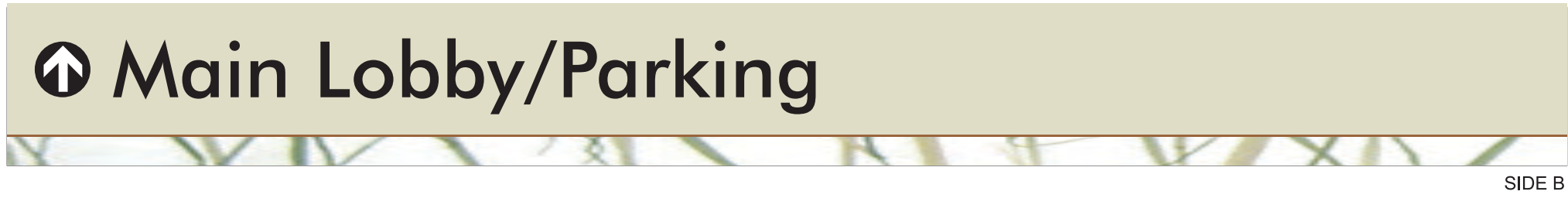
5 10 STRIP - SIGN TYPE B.1
SCALE: 3/4" = 1' 0"



9 10 STRIP - SIGN TYPE B.1
SCALE: 3/4" = 1' 0"



7 D/F CEILING MOUNTED OVERHEAD - SIGN TYPE D.30
SCALE: 1/8"= 1"





12

D/F CEILING MOUNT OVERHEAD - SIGN TYPE D.12
SCALE: 1/4" = 1"

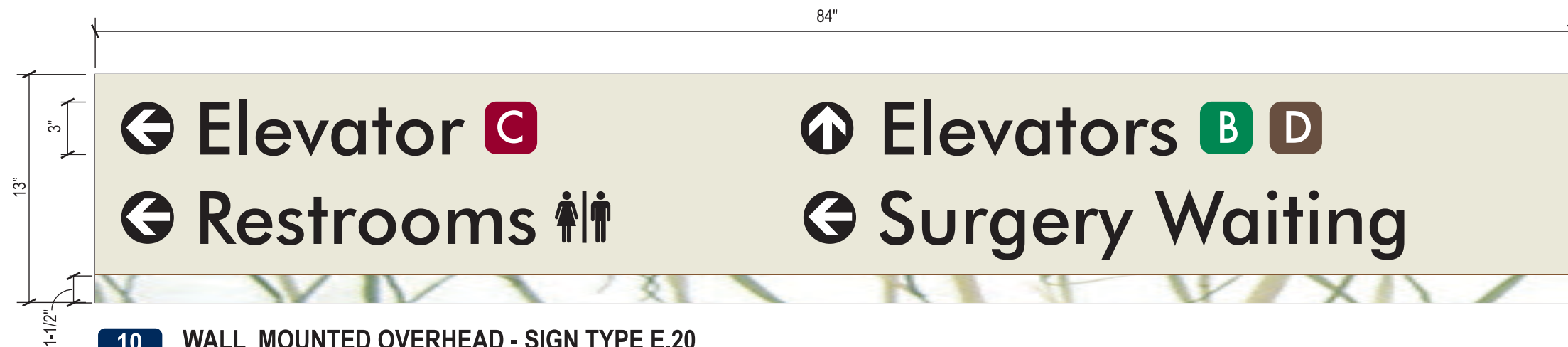


SIDE A



SIDE B

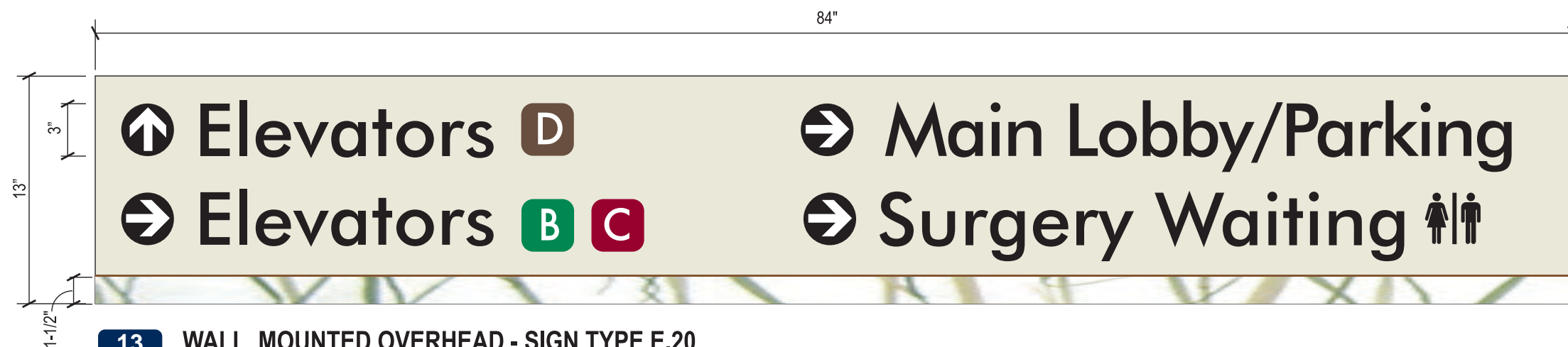
Wayfinding Floor 1



10 WALL MOUNTED OVERHEAD - SIGN TYPE E.20
SCALE: 1/8" = 1"



11 WALL MOUNTED OVERHEAD - SIGN TYPE E.20
SCALE: 1/8" = 1"



13 WALL MOUNTED OVERHEAD - SIGN TYPE E.20
SCALE: 1/8" = 1"



11.1

WALL MOUNT OVERHEAD - SIGN TYPE E.12

SCALE: 1/4" = 1"

