

# RIDEOUT OCCUPATIONAL HEALTH



RIDEOUT OCCUPATIONAL  
HEALTH

RIDEOUT DRUG TESTING  
SERVICES

OUTSTANDING ITEMS:  
• BUILDING COLOR TO BE VERIFIED

**Fremont - Rideout Health Group  
Rideout Occupational Health  
Rideout Drug Testing Services  
1531 Plumas Court  
Yuba City, CA 95991**

**April 29, 2013    Revised: September 10, 2013**



**FONTS**

Foundry Old Style Medium

ABCDEFGHIJKLMNOPQRSTUVWXYZ  
 abcdefghijklmnopqrstuvwxyz

Foundry Old Style Book

ABCDEFGHIJKLMNOPQRSTUVWXYZ  
 abcdefghijklmnopqrstuvwxyz

Foundry Old Style Bold

ABCDEFGHIJKLMNOPQRSTUVWXYZ  
 abcdefghijklmnopqrstuvwxyz

Frutiger Regular

ABCDEFGHIJKLMNOPQRSTUVWXYZ  
 abcdefghijklmnopqrstuvwxyz

Frutiger Bold

ABCDEFGHIJKLMNOPQRSTUVWXYZ  
 abcdefghijklmnopqrstuvwxyz

**VENEERS**



ELDORADO STONE®  
 BLUFFSTONE MINERET®



TOP CAP  
 MT. MARRIAH  
 [A & A Stepping Stone Manufacturing, Inc.  
 10291 Ophir Road, Newcastle, CA 95901  
 (530) 885-7481]

MORTAR  
 BASALITE TYPE S 225 (GRAY)

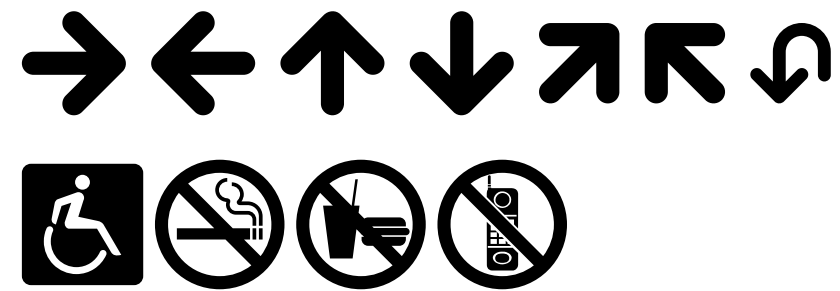
THE SANS BOLD

ABCDEFGHIJKLMNOPQRSTUVWXYZ  
 abcdefghijklmnopqrstuvwxyz  
 1234567890

THE SANS ITALIC

ABCDEFGHIJKLMNOPQRSTUVWXYZ  
 abcdefghijklmnopqrstuvwxyz  
 1234567890

**SYMBOLS**



**FINISHES & VINYLs**



PAINTED TO MATCH PMS 3025C BLUE/GREEN (SATIN)



PAINTED SATIN TO MATCH BUILDING - *COLOR TO BE VERIFIED*



PAINTED TO MATCH PMS 186C RED (SATIN)  
 (3M 3630-53 CARDINAL RED - TRANSLUCENT)  
 (3M 3650-53 CARDINAL RED - OPAQUE)



PAINTED MATTHEWS BRUSHED ALUMINUM (SATIN)



PAINTED SATIN WHITE  
 (3M 3630-20 WHITE - TRANSLUCENT)  
 (3M 7725-10 WHITE - OPAQUE)  
 (3M 680-10 WHITE - REFLECTIVE)



MATTHEWS PAINT MP 28448  
 UMBRA GREY METALLIC LRV 31.5 (SATIN)



SEATTLE • SAN DIEGO

MAIN OFFICE  
 380 STEVENS AVENUE #307  
 SOLANA BEACH, CA 92075

PHONE: 858.345.1542  
 FAX: 858.408.3203

CLIENT INFORMATION:  
 Fremont - Rideout Health Group  
 Rideout Occupational Health  
 Rideout Drug Testing Services  
 1531 Plumas Court  
 Yuba City, CA 95991



APPROVALS:  
 IG ACCOUNT MANAGER \_\_\_\_\_  
 IG PRODUCTION MANAGER \_\_\_\_\_  
 CLIENT APPROVAL \_\_\_\_\_

SALES REP:  
**Rebecca Redmon**  
 DESIGNER:  
**R.Germar**

REVISION DATES:  
 1 06-11-2013 RLG  
 2 07-31-2013 RLG  
 3 08-26-2013 RLG  
 4 09-10-2013 RLG  
 5

VOLTAGE:      120V ☐  
                   240V ☐

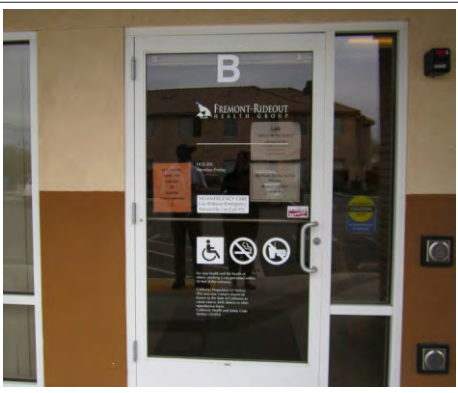
THIS ORIGINAL UNPUBLISHED DESIGN IS  
 THE SOLE PROPERTY OF IMAGE GROUP.  
 IT CANNOT BE REPRODUCED, COPIED OR  
 EXHIBITED IN WHOLE OR PART, WITHOUT  
 FIRST OBTAINING WRITTEN CONSENT  
 FROM IMAGE GROUP. COLORS  
 REPRESENTED IN THIS DRAWING ARE  
 FOR PRESENTATION PURPOSES ONLY.  
 THEY MAY NOT MATCH YOUR FINISHED  
 PRODUCT PERFECTLY. COLOR CALL-OUTS  
 ARE FOR REFERENCE PURPOSES ONLY.

PRIMARY ELECTRICAL TO SIGN  
 LOCATIONS IS TO BE PROVIDED BY  
 OTHERS. 20 AMP DEDICATED CIRCUIT(S)  
 WITH NO SHARED NEUTRALS AND A  
 GROUND RETURNING TO THE PANEL IS  
 REQUIRED FOR ALL INSTALLATIONS. THIS  
 SIGN IS INTENDED TO BE INSTALLED IN  
 ACCORDANCE WITH THE REQUIREMENTS  
 OF ARTICLE 600 OF THE NATIONAL  
 ELECTRICAL CODE AND/OR OTHER  
 APPLICABLE LOCAL CODES. THIS  
 INCLUDES PROPER GROUNDING AND  
 BONDING OF THE SIGN.

DATE  
**04-29-2013**  
 DESIGN NO:  
**13-1070-04**  
 PROJECT LOCATION:  
**Rideout Occupational Health**  
 SIGN TYPE:

**Project**  
**Material**  
**References**





EXISTING NON-ILLUMINATED VINYL WINDOW GRAPHICS (36 1/2" WIDE WINDOW)



EXISTING SOUTHWEST ELEVATION



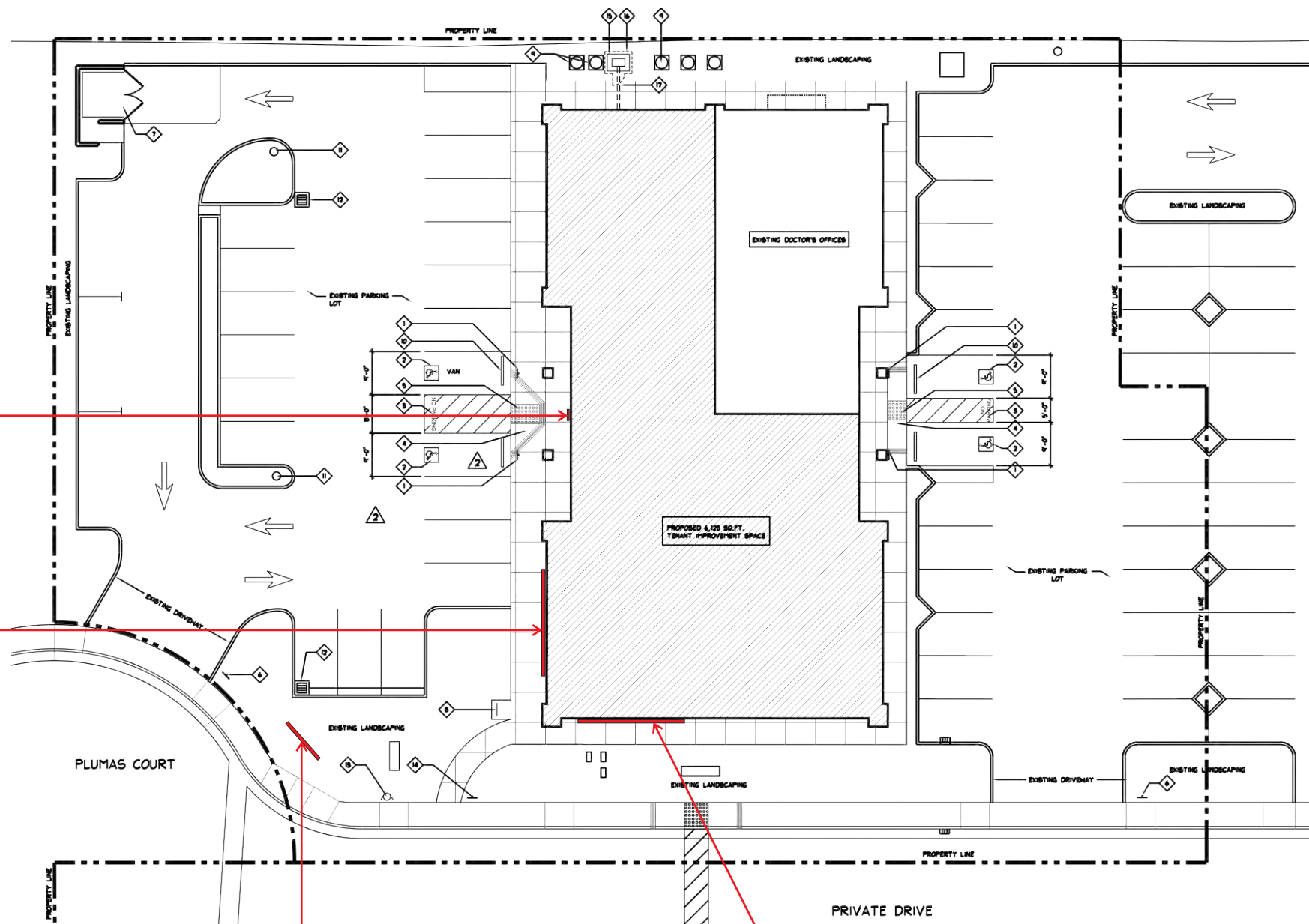
EXISTING DOUBLE FACED NON-ILLUMINATED GROUND SIGN (LOCATED BY MAIN STREET ENTRY)



EXISTING SINGLE FACED NON-ILLUMINATED GROUND SIGN



EXISTING SOUTHEAST ELEVATION



SITE PLAN

SCALE: 1" = 30'-0"





RIDEOUT OCCUPATIONAL  
HEALTH

RIDEOUT DRUG TESTING  
SERVICES

### Q.1 PROPOSED NON-ILLUMINATED VINYL WINDOW GRAPHICS



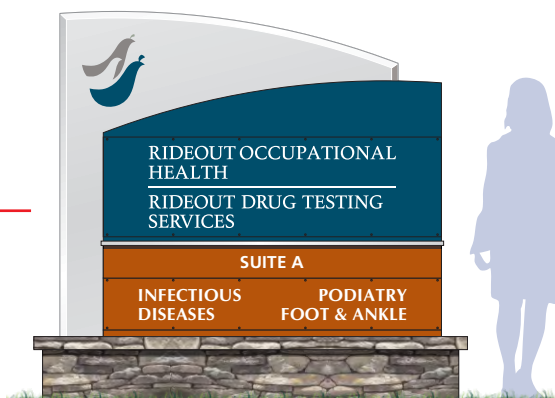
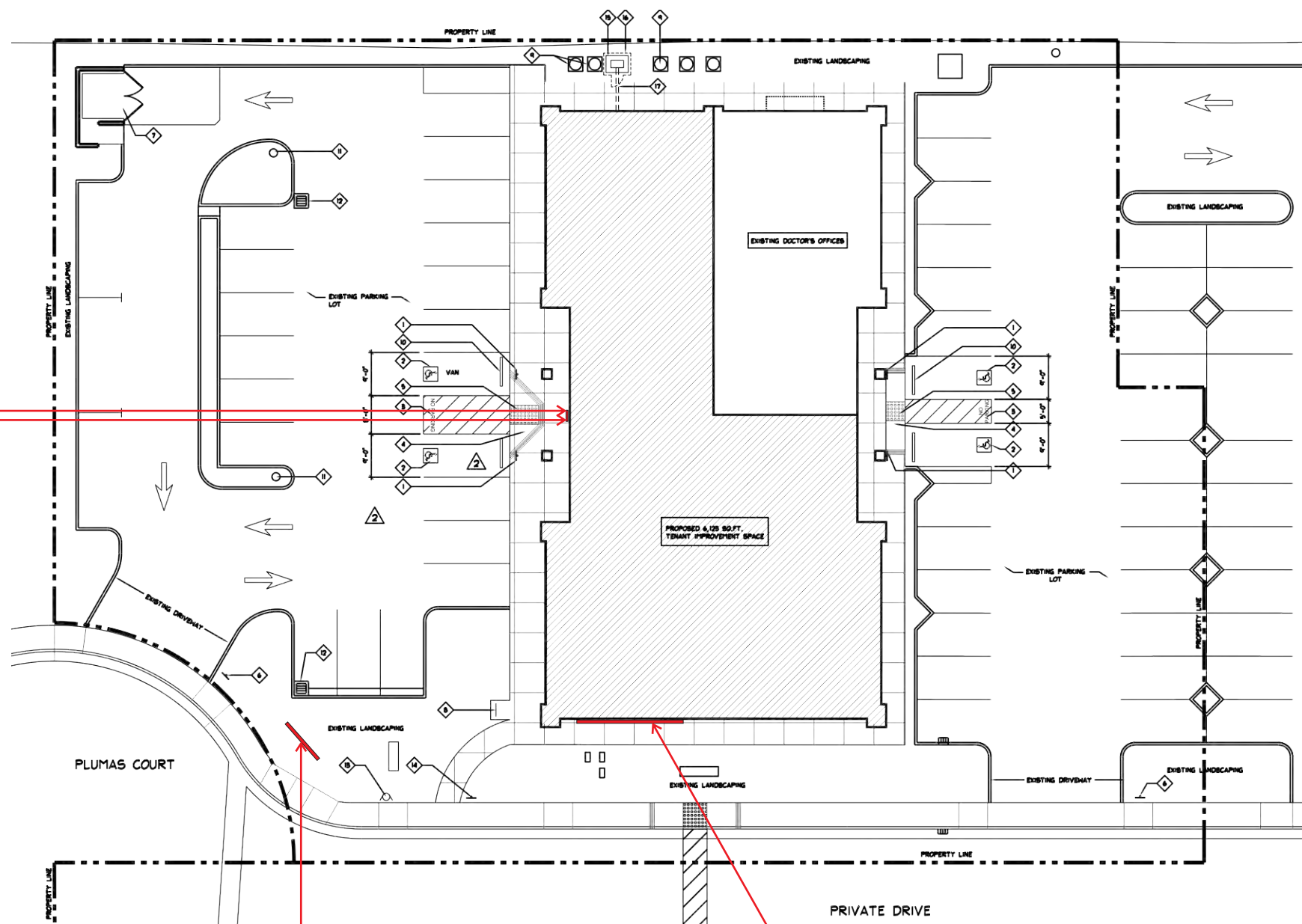
For your health and the health of others, smoking is not permitted within 50 feet of this entrance.

California Proposition 65 Notice:  
This area may contain chemicals known to the State of California to cause cancer, birth defects or other reproductive harm.  
California Health and Safety Code Section 25246.3

### Q.2 PROPOSED NON-ILLUMINATED VINYL WINDOW GRAPHICS



### E.1 PROPOSED DOUBLE FACED ILLUMINATED DIRECTIONAL SIGN NOTE: LOCATED BY MAIN STREET ENTRY



### C.1 PROPOSED SINGLE FACED INTERNALLY ILLUMINATED MONUMENT SIGN



### O.1 PROPOSED SINGLE FACED INTERNALLY ILLUMINATED SIGN CABINET

SITE PLAN

SCALE: 1" = 30'-0"



SEATTLE • SAN DIEGO

MAIN OFFICE  
380 STEVENS AVENUE #307  
SOLANA BEACH, CA 92075

PHONE: 858.345.1542  
FAX: 858.408.3203

CLIENT INFORMATION:  
Fremont - Rideout Health Group  
Rideout Occupational Health  
Rideout Drug Testing Services  
1531 Plumas Court  
Yuba City, CA 95991



APPROVALS:  
IG ACCOUNT MANAGER \_\_\_\_\_  
IG PRODUCTION MANAGER \_\_\_\_\_  
CLIENT APPROVAL \_\_\_\_\_

SALES REP:  
Rebecca Redmon  
DESIGNER:  
R.Germar

REVISION DATES:  
1 06-11-2013 RLG  
2 07-31-2013 RLG  
3 08-26-2013 RLG  
4 09-10-2013 RLG  
5

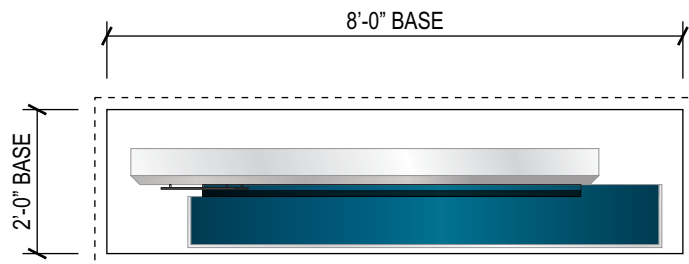
VOLTAGE: 120V ☐  
240V ☐

THIS ORIGINAL UNPUBLISHED DESIGN IS THE SOLE PROPERTY OF IMAGE GROUP. IT CANNOT BE REPRODUCED, COPIED OR EXHIBITED IN WHOLE OR PART, WITHOUT FIRST OBTAINING WRITTEN CONSENT FROM IMAGE GROUP. COLORS REPRESENTED IN THIS DRAWING ARE FOR PRESENTATION PURPOSES ONLY. THEY MAY NOT MATCH YOUR FINISHED PRODUCT PERFECTLY. COLOR CALL-OUTS ARE FOR REFERENCE PURPOSES ONLY.

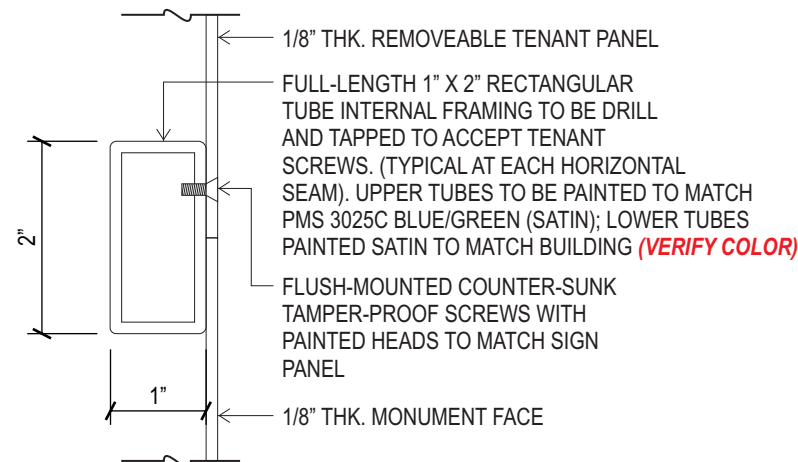
PRIMARY ELECTRICAL TO SIGN LOCATIONS IS TO BE PROVIDED BY OTHERS. 20 AMP DEDICATED CIRCUIT(S) WITH NO SHARED NEUTRALS AND A GROUND RETURNING TO THE PANEL IS REQUIRED FOR ALL INSTALLATIONS. THIS SIGN IS INTENDED TO BE INSTALLED IN ACCORDANCE WITH THE REQUIREMENTS OF ARTICLE 600 OF THE NATIONAL ELECTRICAL CODE AND/OR OTHER APPLICABLE LOCAL CODES. THIS INCLUDES PROPER GROUNDING AND BONDING OF THE SIGN.

DATE  
04-29-2013  
DESIGN NO:  
13-1070-04  
PROJECT LOCATION:  
Rideout Occupational Health  
SIGN TYPE:  
Site Plan of  
Proposed  
Signage

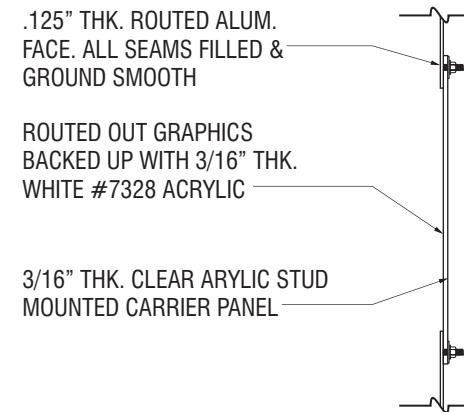




**PLAN VIEW**  
SCALE: 3/8" = 1'-0"



**FRAMING DETAIL**  
SCALE: HALF-SIZE



**ENLARGED DETAIL AT BACKED-UP GRAPHICS**  
NO SCALE

## SIGN SPECIFICATIONS



### BACK CABINET

**CABINET MATERIAL:** .125" THICK ALUMINUM OVER 1 1/2" X 1 1/2" ALUMINUM ANGLE FRAME. FACE RETURNS OF CABINET TO BE BEVELED.  
**CABINET FINISH:** PAINTED MATTHEWS BRUSHED ALUMINUM (SATIN)  
**CABINET DEPTH:** 6"  
**FACE MATERIAL:** .125" THICK ALUMINUM  
**FACE FINISH:** PAINTED MATTHEWS BRUSHED ALUMINUM (SATIN)  
**GRAPHIC SPECS:** ROUTED 1/4" THICK ALUMINUM PLATE LOGO SPACED OFF 1/2" FROM CABINET FACE - AREA BEHIND LOGO TO BE BACKED WITH 3/16" THICK #7328 WHITE ACRYLIC (WILL HAVE A HALO ILLUMINATION AT NIGHT).  
**GRAPHIC FINISH:** FACES & EDGES PAINTED TO MATCH PMS 3025C BLUE/GREEN (SATIN) & MATTHEWS PAINT MP 28448 UMBRA GREY METALLIC LRV 31.5 (SATIN)  
**ILLUMINATION:** WHITE LED'S.  
**INTERNAL SUPPORT MATERIAL:** PER ENGINEERING  
**INSTALL METHOD:** CABINET TO HAVE INTERNAL FABRICATED SADDLE TO ACCEPT STEEL TUBE SUPPORT. CABINET TO BE THRU-BOLTED THRU SADDLE INTO STEEL TUBE SUPPORTS. ALSO BOLTED TO STEEL FRAME OF BASE.



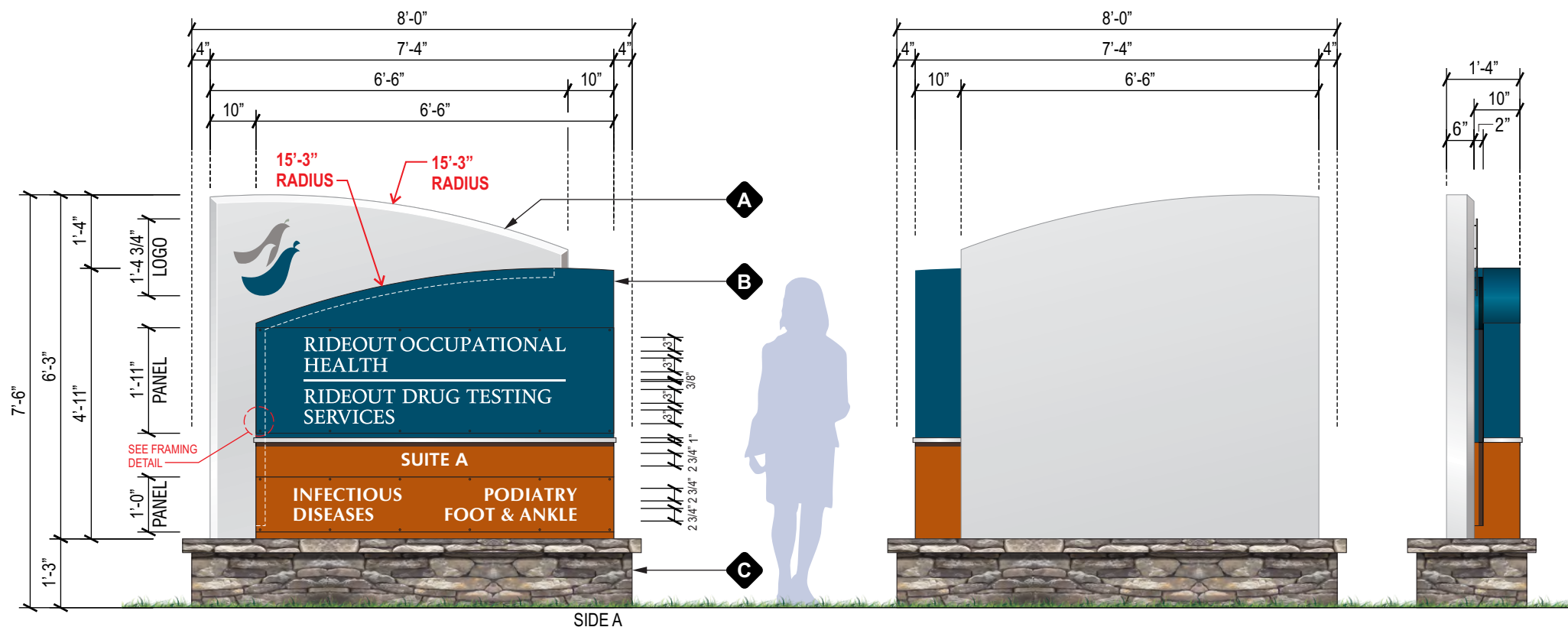
### FRONT CABINET

**CABINET MATERIAL:** .125" THICK ALUMINUM OVER 1 1/2" X 1 1/2" ALUMINUM ANGLE FRAME. TO HAVE A 2" REVEAL WHERE FRONT AND BACK CABINETS MEET. REVEAL TO HOUSE WHITE LED'S. ILLUMINATION TO WASH THE BACK CABINET FACE.  
**CABINET FINISH:**  
**UPPER AREA -** PAINTED TO MATCH PMS 3025C BLUE/GREEN (SATIN)  
**LOWER AREA -** PAINTED SATIN TO MATCH BUILDING (VERIFY COLOR)  
**CABINET DEPTH:** 10"  
**FACE MATERIAL:** .125" THICK ALUMINUM  
**TENANT PANELS:** .125" THICK ALUMINUM (PANELS TO BE INDIVIDUALLY REMOVEABLE WITH CLEAN BUTT-SEAM AT ADJOINING PANELS)  
**FACE/TENANT PANEL FINISH:**  
**UPPER PANEL -** PAINTED TO MATCH PMS 3025C BLUE/GREEN (SATIN)  
**LOWER PANEL -** PAINTED SATIN TO MATCH BUILDING (VERIFY COLOR)  
**GRAPHIC SPECS:** ROUTED OUT OF FACE AND BACKED W/ 3/16" THICK WHITE #7328 ACRYLIC  
**ACCENT LINE MATERIAL:** 1/2" THICK X 1" WIDE ALUMINUM PLATE - ROLLED TO MATCH RADIUS OF FACE & TO WRAP RETURNS OF CABINET.  
**ACCENT FINISH:** PAINTED MATTHEWS BRUSHED ALUMINUM (SATIN)  
**INTERNAL ILLUMINATION:** WHITE LED'S  
**INTERNAL SUPPORT MATERIAL:** PER ENGINEERING  
**INSTALL METHOD:** CABINET TO BE BOLTED TO BACK CABINET.



### BASE

**BASE MATERIAL:** STONE VENEER & DUROCK CLADDING OVER 1 1/2" X 1 1/2" STEEL ANGLE FRAME  
**VENEER SPECS:** EL DORADO STONE - BLUFFSTONE MINERET  
**TOP CAP:** MT. MARRIAH  
**MORTAR:** BASALITE TYPE S 225 (GRAY)



**C.1 (SIGN TYPE C) S/F INTERNALLY ILLUMINATED MONUMENT SIGN**  
SCALE: 3/8" = 1'-0" **QTY - 1**

**SIDE VIEW**  
SCALE: 3/8" = 1'-0"

#### CLIENT INFORMATION:

**Fremont - Rideout Health Group**  
**Rideout Occupational Health**  
**Rideout Drug Testing Services**  
1531 Plumas Court  
Yuba City, CA 95991



#### APPROVALS:

**IG ACCOUNT MANAGER** \_\_\_\_\_

**IG PRODUCTION MANAGER** \_\_\_\_\_

**CLIENT APPROVAL** \_\_\_\_\_

#### SALES REP:

**Rebecca Redmon**

#### DESIGNER:

**R.Germar**

#### REVISION DATES:

**1 06-11-2013 RLG**

**2 07-31-2013 RLG**

**3 08-26-2013 RLG**

**4 09-10-2013 RLG**

**5**

#### VOLTAGE:

**120V** ☐

**240V** ☐

THIS ORIGINAL UNPUBLISHED DESIGN IS THE SOLE PROPERTY OF IMAGE GROUP. IT CANNOT BE REPRODUCED, COPIED OR EXHIBITED IN WHOLE OR PART, WITHOUT FIRST OBTAINING WRITTEN CONSENT FROM IMAGE GROUP. COLORS REPRESENTED IN THIS DRAWING ARE FOR PRESENTATION PURPOSES ONLY. THEY MAY NOT MATCH YOUR FINISHED PRODUCT PERFECTLY. COLOR CALL-OUTS ARE FOR REFERENCE PURPOSES ONLY.

PRIMARY ELECTRICAL TO SIGN LOCATIONS IS TO BE PROVIDED BY OTHERS. 20 AMP DEDICATED CIRCUIT(S) WITH NO SHARED NEUTRALS AND A GROUND RETURNING TO THE PANEL IS REQUIRED FOR ALL INSTALLATIONS. THIS SIGN IS INTENDED TO BE INSTALLED IN ACCORDANCE WITH THE REQUIREMENTS OF ARTICLE 600 OF THE NATIONAL ELECTRICAL CODE AND/OR OTHER APPLICABLE LOCAL CODES. THIS INCLUDES PROPER GROUNDING AND BONDING OF THE SIGN.

#### DATE

**04-29-2013**

#### DESIGN NO:

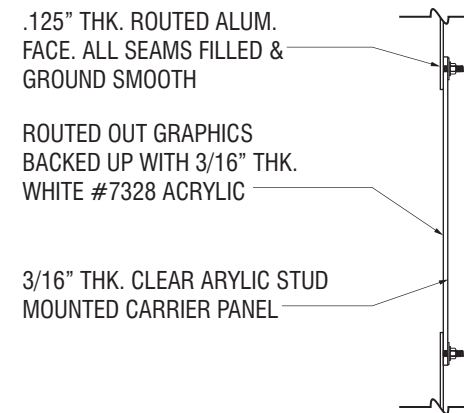
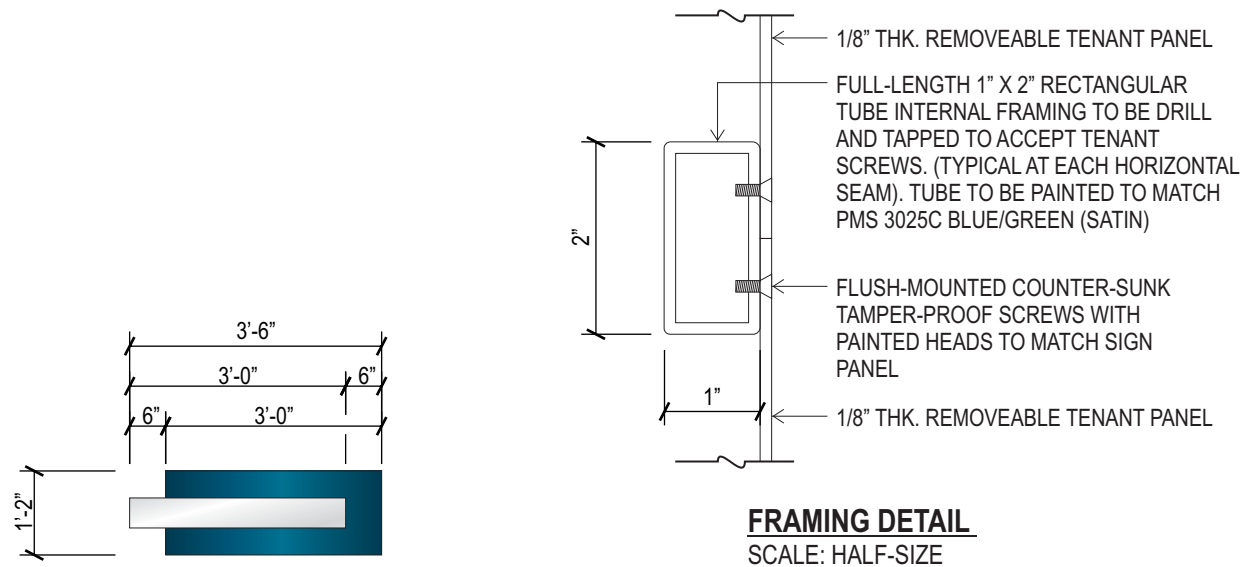
**13-1070-04**

#### PROJECT LOCATION:

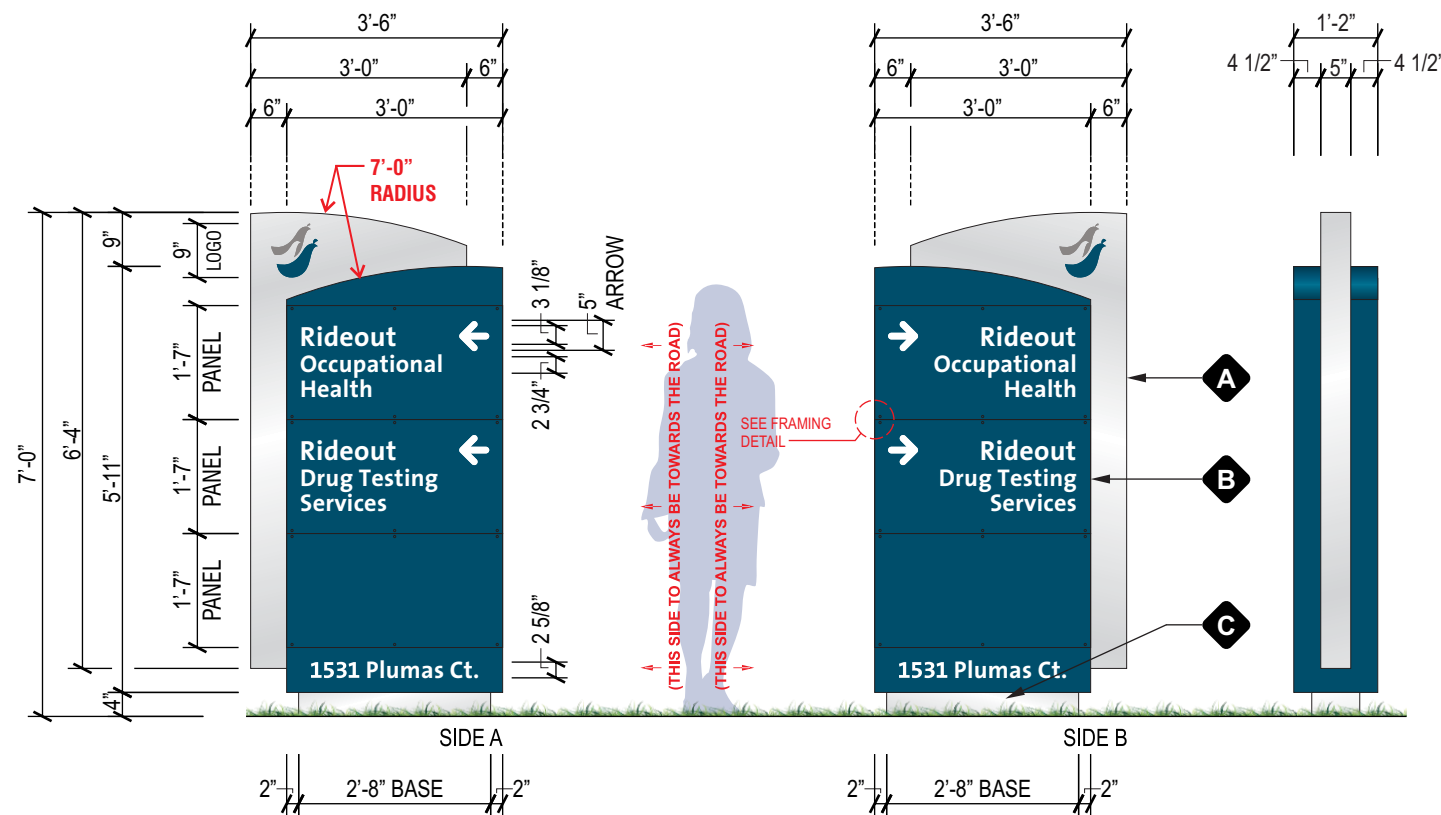
**Rideout Occupational Health**

#### SIGN TYPE:

**Sign Type C**  
**Monument Sign**



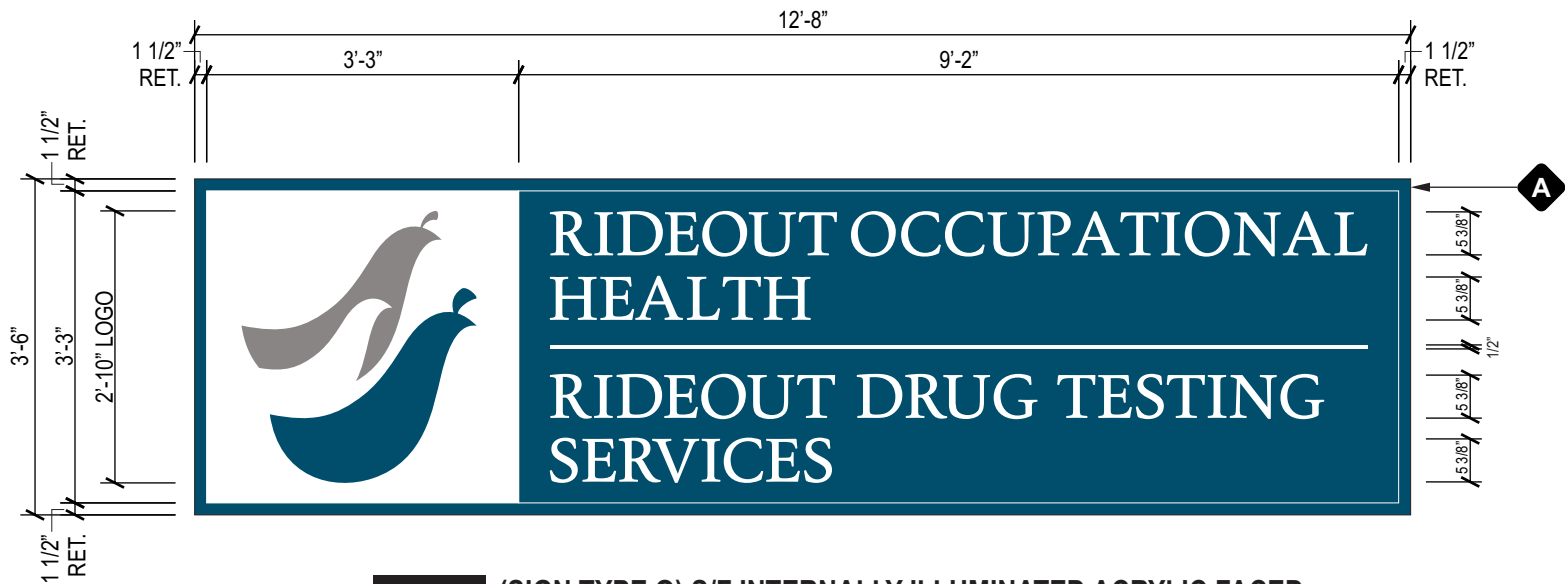
**ENLARGED DETAIL AT BACKED-UP GRAPHICS**  
NO SCALE



**E.1 (SIGN TYPE E) D/F INTERNALLY ILLUMINATED DIRECTIONAL SIGN**  
SCALE: 3/8" = 1'-0" QTY - 1

**SIGN SPECIFICATIONS**

- A ACCENT FIN**  
MATERIAL: .125" THICK ALUMINUM OVER 1 1/2" X 1 1/2" ALUMINUM ANGLE FRAME.  
FINISH: PAINTED MATTHEWS BRUSHED ALUMINUM (SATIN).  
FINISH DEPTH: 5"  
FACE MATERIAL: .125" THICK ALUMINUM  
FACE FINISH: PAINTED MATTHEWS BRUSHED ALUMINUM (SATIN).  
GRAPHIC SPECS: MASKED & PAINTED GRAPHICS  
GRAPHIC FINISH: PAINTED TO MATCH PMS 3025C BLUE/GREEN (SATIN) & MATTHEWS PAINT MP 28448 UMBRA GREY METALLIC LRV 31.5 (SATIN).  
INSTALL METHOD: CABINET TO HAVE INTERNAL FABRICATED SADDLE TO ACCEPT STEEL TUBE SUPPORT. CABINET TO BE THRU-BOLTED THRU SADDLE INTO STEEL TUBE SUPPORTS.
- B MAIN CABINET**  
CABINET MATERIAL: .125" THICK ALUMINUM OVER 1 1/2" X 1 1/2" ALUMINUM ANGLE FRAME.  
CABINET FINISH: PAINTED TO MATCH PMS 3025C BLUE/GREEN (SATIN).  
CABINET DEPTH: 1'-2".  
FACE MATERIAL: .125" THICK ALUMINUM  
TENANT PANELS: .125" THICK ALUMINUM (PANELS TO BE INDIVIDUALLY REMOVEABLE WITH CLEAN BUTT-SEAM AT ADJOINING PANELS).  
FACE/TENANT PANEL FINISH: PAINTED TO MATCH PMS 3025C BLUE/GREEN (SATIN).  
GRAPHIC SPECS: ROUTED OUT OF FACE AND BACKED W/ 3/16" THICK WHITE #7328 ACRYLIC.  
INTERNAL ILLUMINATION: WHITE LED'S  
INTERNAL SUPPORT MATERIAL: 3" X 3" STL TUBE (X1) - TO PROJECT BELOW SIGN TO MATCH REQ. FOOTING DEPTH  
INSTALL METHOD: CABINET TO BE BOLTED TO ACCENT FIN.
- C BASE**  
BASE: 4" X 2" ALUMINUM CHANNEL  
BASE FINISH: PAINTED MATTHEWS BRUSHED ALUMINUM (SATIN)  
INSTALL METHOD: THRU-BOLTED THRU BOTTOM OF MAIN CABINET. FRAME. ENTIRE SIGN IS INSTALLED INTO A POURED CONCRETE FOOTER. MAIN SUPPORT IS DIRECTLY BURIED INTO AUGURED HOLE FILLED W/ CONCRETE.



**0.1** (SIGN TYPE O) S/F INTERNALLY ILLUMINATED ACRYLIC FACED  
SIGN CABINET WITH PAINTED GRAPHICS  
SCALE: 1/2" = 1'-0" QTY - 1

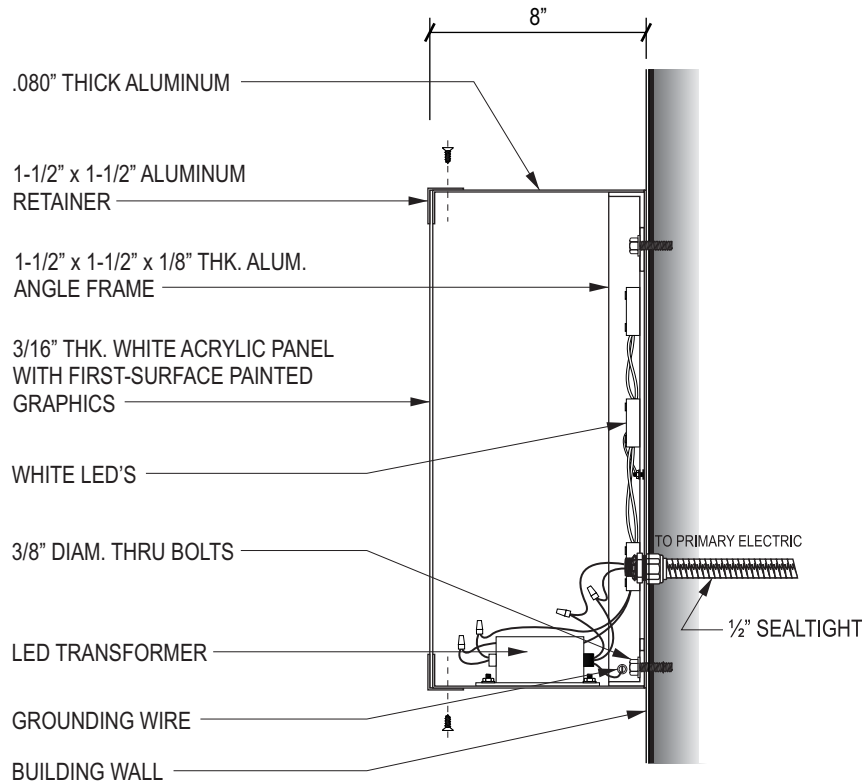
## SIGN SPECIFICATIONS

### SIGN CABINET

**RETURN MATERIAL:** .080" THICK ALUMINUM OVER 1 1/2" X 1 1/2" ALUMINUM ANGLE FRAME.  
**RETURN FINISH:** PAINTED TO MATCH PMS 3025C BLUE/GREEN (SATIN).  
**RETURN DEPTH:** 8"  
**RETAINERS:** 1 1/2" X 1 1/2" ALUMINUM RETAINERS.  
**RETAINER FINISH:** PAINTED TO MATCH PMS 3025C BLUE/GREEN (SATIN).  
**RETAINING SCREWS:** FLUSH MOUNTED COUNTER-SUNK SCREWS WITH PAINTED HEADS TO MATCH PMS 3025C BLUE/GREEN (SATIN).  
**FACE MATERIAL:** 3/16" THICK WHITE #7328 ACRYLIC.  
**FACE FINISH:** OPAQUE PAINTED TO MATCH PMS 3025C BLUE/GREEN (SATIN).  
**GRAPHIC SPECS:** LOGO - OPAQUE PAINTED TO MATCH PMS 3025C BLUE/GREEN (SATIN) & MATTHEWS PAINT MP 28448 UMBRA GREY METALLIC LRV 31.5 (SATIN);  
**LETTERS -** OPAQUE PAINTED BACKGROUND TO MATCH PMS 3025C BLUE/GREEN (SATIN) WITH MASKED OFF LETTERS  
**INTERNAL ILLUMINATION:** WHITE LED'S  
**BALLASTS:** 120V BALLAST (INTERNALLY MOUNTED)  
**INSTALL METHOD:** SEE CONSTRUCTION DETAILS.



NIGHT TIME VIEW

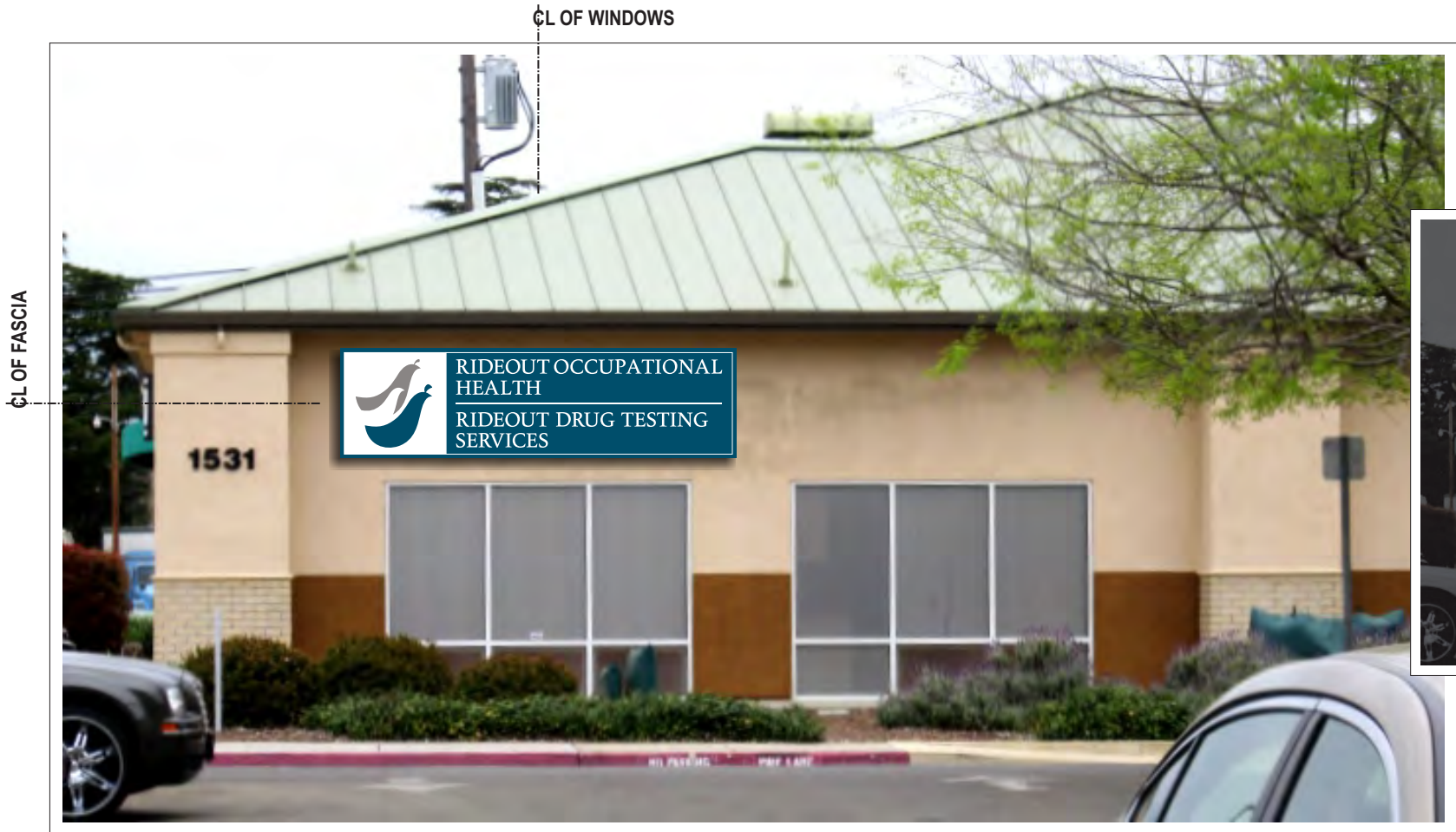


SECTION DETAIL NO SCALE

GENERAL NOTES:  
- TO BE U.L. LISTED  
- ALL ELECTRICAL WORK SHALL BE PERFORMED IN ACCORDANCE WITH "NEC" REF. SECTION 600  
- ALL ELECTRICAL SIGN SECTIONS TO HAVE U.L. LABEL IN ACCORDANCE WITH "NEC" 600.3 AND MANUFACTURERS LABEL LOCATED NEXT TO DISCONNECT SWITCH  
- ALL NON-CURRENT CARRYING METAL PARTS OF SIGN SHALL BE GROUNDED & BONDED IN ACCORDANCE WITH "NEC" 250  
- ALL WIRING CONTAINED IN ENCLOSED AREAS  
- SPLICING OF CONDUCTORS SHALL BE MADE IN JUNCTION BOXES OR SIMILAR METAL ENCLOSURES  
- AT THE POINT THAT ELECTRICAL CABLE PASSES THRU THE SIGN BOX, IT SHALL PASS THRU A U.L. LISTED RUBBER GROMMET

**NOTE:**  
120V/20 AMP CIRCUITS TO BE PROVIDED  
BY G.C. / ELECTRICIAN

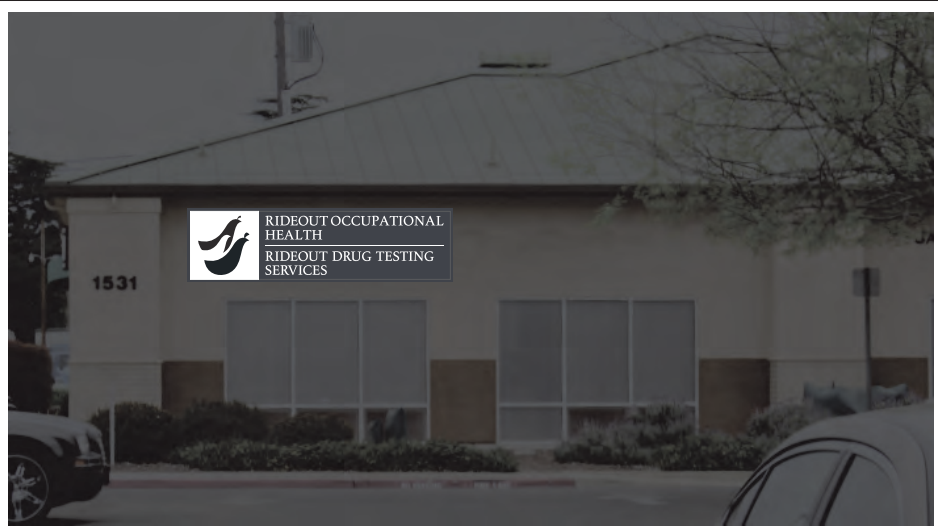




O.1

PROPOSED SOUTHEAST ELEVATION

SCALE: 3/16" = 1'-0"



PROPOSED NIGHT TIME VIEW

SEATTLE • SAN DIEGO

MAIN OFFICE  
380 STEVENS AVENUE #307  
SOLANA BEACH, CA 92075

PHONE: 858.345.1542  
FAX: 858.408.3203

CLIENT INFORMATION:  
Fremont - Rideout Health Group  
Rideout Occupational Health  
Rideout Drug Testing Services  
1531 Plumas Court  
Yuba City, CA 95991



APPROVALS:  
IG ACCOUNT MANAGER \_\_\_\_\_  
IG PRODUCTION MANAGER \_\_\_\_\_  
CLIENT APPROVAL \_\_\_\_\_

SALES REP:  
Rebecca Redmon  
DESIGNER:  
R.Germar

REVISION DATES:  
1 06-11-2013 RLG  
2 07-31-2013 RLG  
3 08-26-2013 RLG  
4 09-10-2013 RLG  
5

VOLTAGE: 120V ☐  
240V ☐

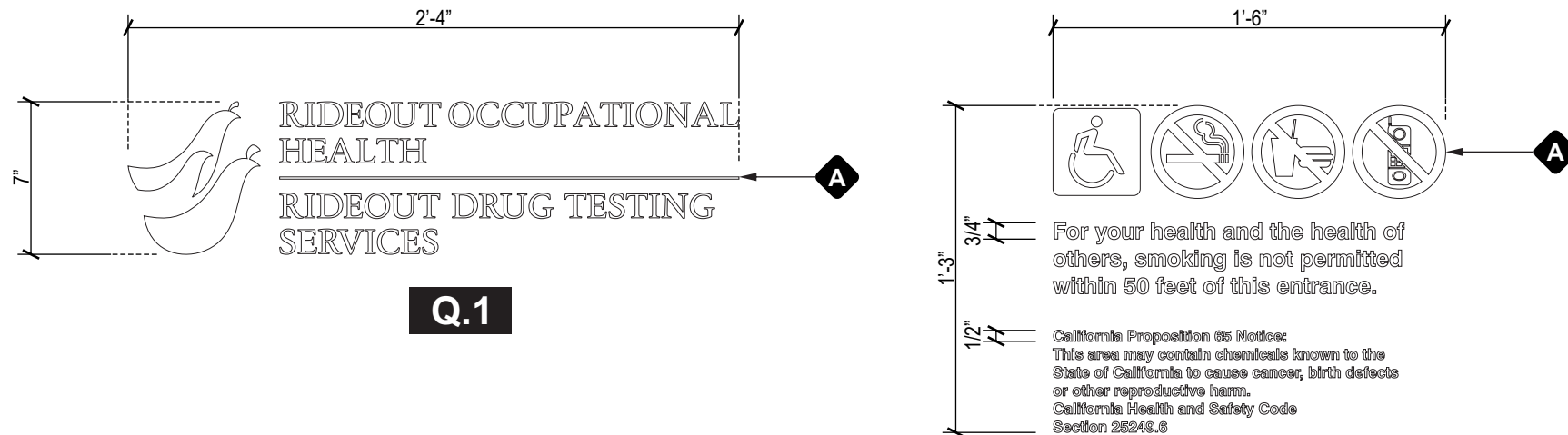
THIS ORIGINAL UNPUBLISHED DESIGN IS THE SOLE PROPERTY OF IMAGE GROUP. IT CANNOT BE REPRODUCED, COPIED OR EXHIBITED IN WHOLE OR PART, WITHOUT FIRST OBTAINING WRITTEN CONSENT FROM IMAGE GROUP. COLORS REPRESENTED IN THIS DRAWING ARE FOR PRESENTATION PURPOSES ONLY. THEY MAY NOT MATCH YOUR FINISHED PRODUCT PERFECTLY. COLOR CALL-OUTS ARE FOR REFERENCE PURPOSES ONLY.

PRIMARY ELECTRICAL TO SIGN LOCATIONS IS TO BE PROVIDED BY OTHERS. 20 AMP DEDICATED CIRCUIT(S) WITH NO SHARED NEUTRALS AND A GROUND RETURNING TO THE PANEL IS REQUIRED FOR ALL INSTALLATIONS. THIS SIGN IS INTENDED TO BE INSTALLED IN ACCORDANCE WITH THE REQUIREMENTS OF ARTICLE 600 OF THE NATIONAL ELECTRICAL CODE AND/OR OTHER APPLICABLE LOCAL CODES. THIS INCLUDES PROPER GROUNDING AND BONDING OF THE SIGN.

DATE  
04-29-2013  
DESIGN NO:  
13-1070-04  
PROJECT LOCATION:  
Rideout Occupational Health  
SIGN TYPE:

**Proposed  
Southeast  
Elevation**



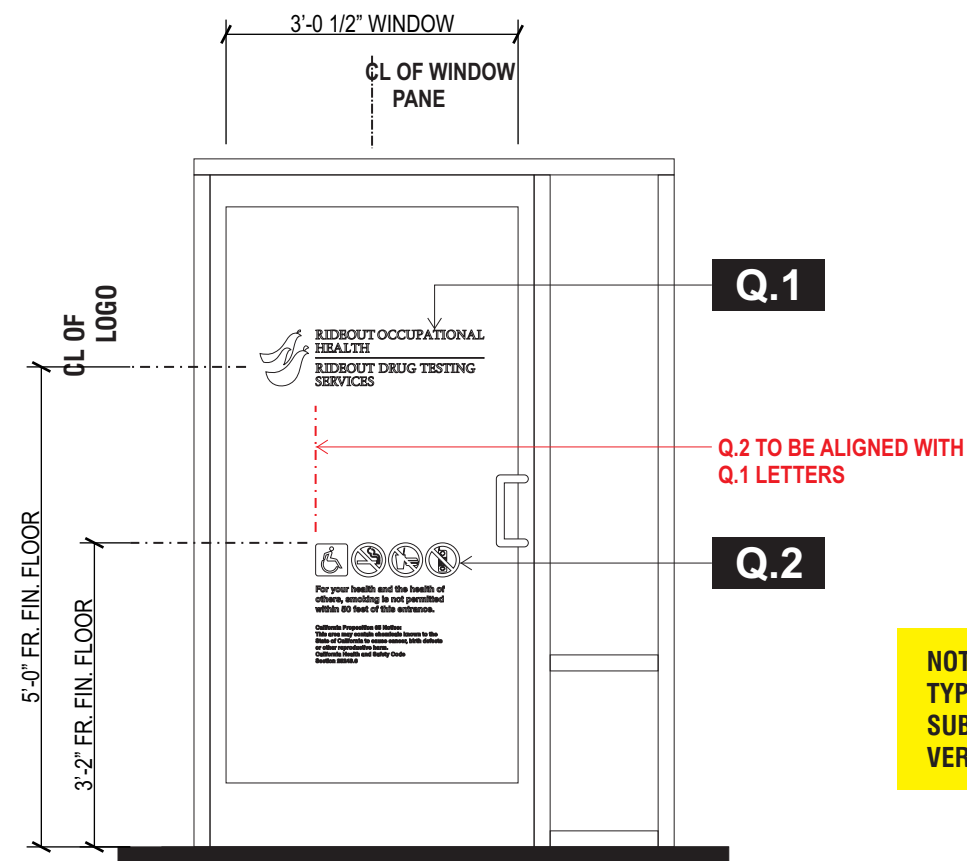


### SIGN SPECIFICATIONS

**WINDOW GRAPHICS**  
GRAPHIC SPECS: 3M 7725-10 WHITE VINYL COPY  
INSTALL METHOD: FIRST-SURFACE OF GLASS WINDOW

Q.2

(SIGN TYPE Q) NON-ILLUMINATED VINYL ENTRY DOOR GRAPHICS  
SCALE: 1 1/2" = 1'-0" QTY - 1 EACH



NOTE:  
TYPICAL APPLICATION  
SUBJECT TO FIELD  
VERIFICATION

ENTRY DOOR ELEVATION  
SCALE: 1/2" = 1'-0"

SEATTLE • SAN DIEGO

MAIN OFFICE  
380 STEVENS AVENUE #307  
SOLANA BEACH, CA 92075

PHONE: 858.345.1542  
FAX: 858.408.3203

CLIENT INFORMATION:  
Fremont - Rideout Health Group  
Rideout Occupational Health  
Rideout Drug Testing Services  
1531 Plumas Court  
Yuba City, CA 95991



APPROVALS:  
IG ACCOUNT MANAGER \_\_\_\_\_  
IG PRODUCTION MANAGER \_\_\_\_\_  
CLIENT APPROVAL \_\_\_\_\_

SALES REP:  
Rebecca Redmon  
DESIGNER:  
R.Germar

REVISION DATES:  
1 06-11-2013 RLG  
2 07-31-2013 RLG  
3 08-26-2013 RLG  
4 09-10-2013 RLG  
5

VOLTAGE: 120V ☐  
240V ☐

THIS ORIGINAL UNPUBLISHED DESIGN IS THE SOLE PROPERTY OF IMAGE GROUP. IT CANNOT BE REPRODUCED, COPIED OR EXHIBITED IN WHOLE OR PART, WITHOUT FIRST OBTAINING WRITTEN CONSENT FROM IMAGE GROUP. COLORS REPRESENTED IN THIS DRAWING ARE FOR PRESENTATION PURPOSES ONLY. THEY MAY NOT MATCH YOUR FINISHED PRODUCT PERFECTLY. COLOR CALL-OUTS ARE FOR REFERENCE PURPOSES ONLY.

PRIMARY ELECTRICAL TO SIGN LOCATIONS IS TO BE PROVIDED BY OTHERS. 20 AMP DEDICATED CIRCUIT(S) WITH NO SHARED NEUTRALS AND A GROUND RETURNING TO THE PANEL IS REQUIRED FOR ALL INSTALLATIONS. THIS SIGN IS INTENDED TO BE INSTALLED IN ACCORDANCE WITH THE REQUIREMENTS OF ARTICLE 600 OF THE NATIONAL ELECTRICAL CODE AND/OR OTHER APPLICABLE LOCAL CODES. THIS INCLUDES PROPER GROUNDING AND BONDING OF THE SIGN.

DATE  
04-29-2013  
DESIGN NO:  
13-1070-04  
PROJECT LOCATION:  
Rideout Occupational Health  
SIGN TYPE:

Sign Type Q  
Vinyl Entry Door  
Graphics